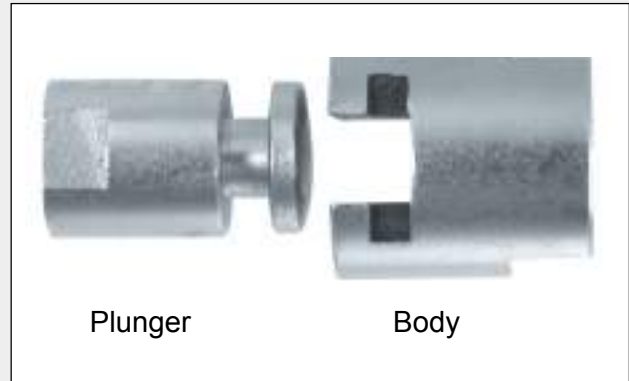


MEM-CO

“Demountable” Cylinder rod alignment compensators

A low cost coupler

For small bore cylinders having threaded rods 10-32 thru 5/16-24



Benefits

MEM-CO’s compensator is “DEMOUNTABLE”, i.e. should it be necessary to remove the driven section or cylinder for servicing it is not necessary to detach our compensator. It merely slips apart thus maintaining original settings and adjustments. This feature is especially valuable in small air press applications where quick set up changes are needed.

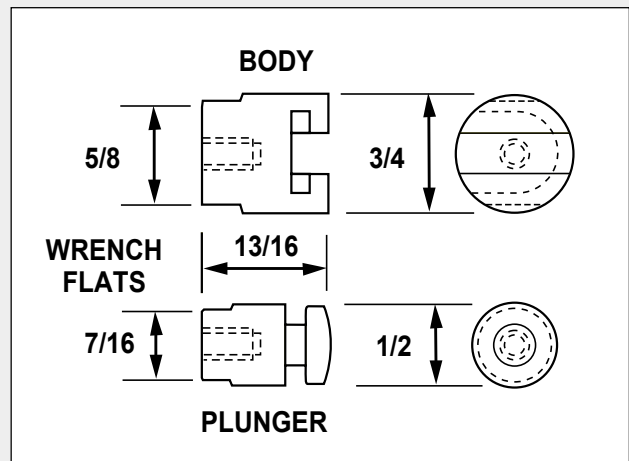
It reduces wear on bearings due to misalignment of machine elements and cylinder shaft.

It prevents power loss in small cylinders caused by poor alignment or direction of machine components. This power loss can be a significant portion of total power of small cylinders.

Incorporating MEM-CO’s compensators in machine design allows more flexibility in tolerances and choices of cylinder mounting.

Specifications

- Angular movement:
3° in any direction or a total of 6°
- Axial movement is a total of .020”
- Material is heat treated steel
- Thread sizes available:
10-32 1/4-28 5/16-24
- Thread depth 5/16”
- Combined length 1-3/8”
- Dimensions shown are the same for all thread sizes



Ordering

Model Number	Thread Size
RAC 332	10-32
RAC 428	1/4-28
RAC524	5/16-24