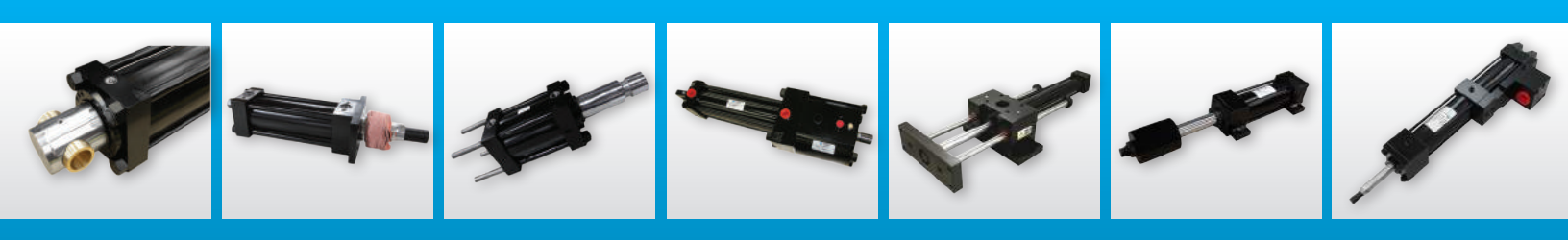




TRD

Hydraulic Product Guide



Setting a new standard for NFPA hydraulic cylinders in :

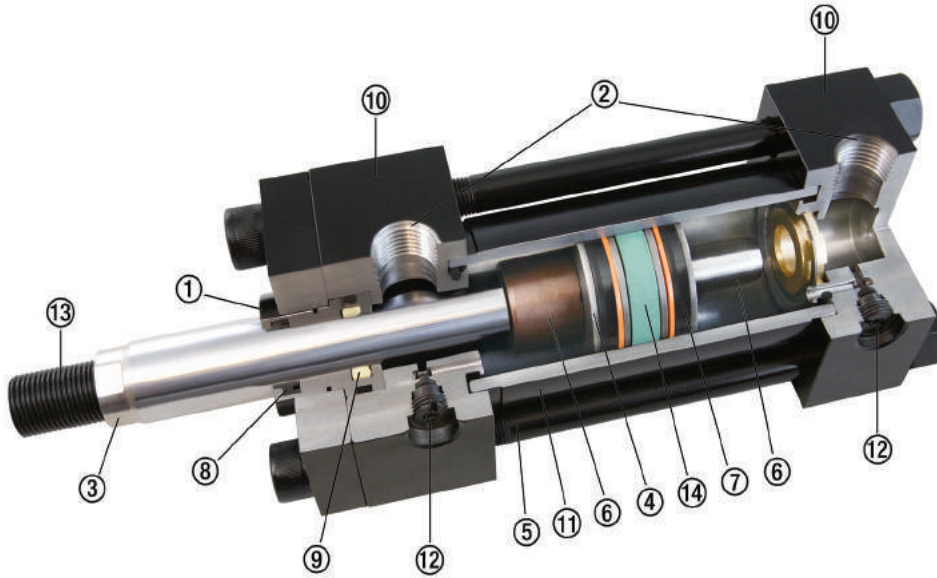
- Heavy-duty design
- CNC machined quality
- 2-3 day delivery



HH SERIES

High Pressure Hydraulic

PRECISION MADE-TO-ORDER
HEAVY DUTY CYLINDERS
IN 2-3 DAYS



Design Capabilities

- 3000 PSIG hydraulic
- Bore sizes 1.50" - 8.00"
- 19 NFPA mounts
- Standard strokes up to 120"
- Rods up to 5.50" in diameter

1. FLOATING ROD BUSHING
2. PORTS
3. PISTON ROD
4. PISTON
5. TIE RODS
6. CUSHION SPUD

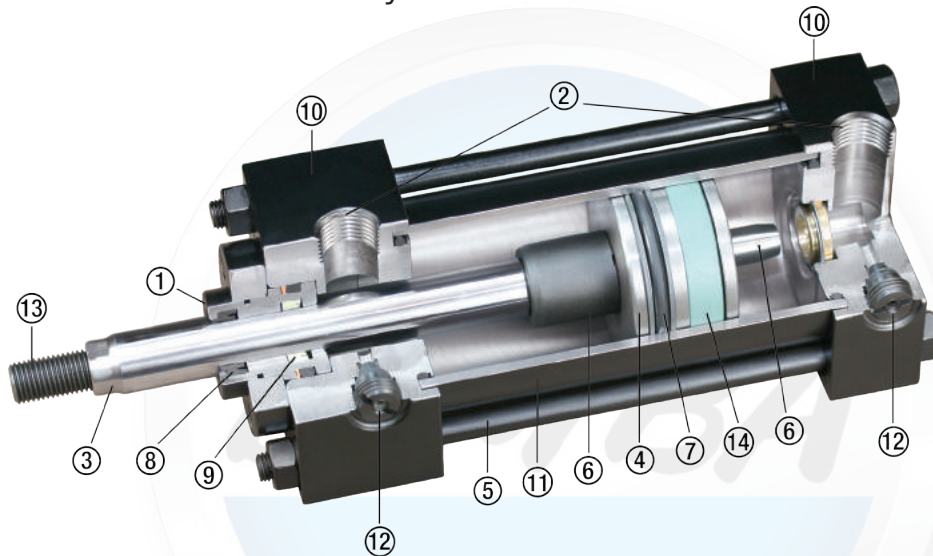
7. PISTON SEALS
8. ROD WIPER
9. ROD SEAL
10. HEAD & CAP
11. TUBE
12. CUSHION ADJUSTMENT NEEDLE

13. PISTON ROD STUD
14. WEAR BAND

FINISH – Black urethane paint

MH SERIES

Medium Pressure Hydraulic



Design Capabilities

- Up to 1500 PSIG hydraulic
- Bore sizes 1.50" - 8.00"
- 20 NFPA mounts
- Standard strokes up to 120"
- Rods up to 5.50" in diameter

1. FLOATING ROD BUSHING
2. PORTS
3. PISTON ROD
4. PISTON
5. TIE RODS
6. CUSHION SPUD

7. PISTON SEAL
8. ROD WIPER
9. ROD SEAL
10. HEAD & CAP
11. TUBE
12. CUSHION ADJUSTMENT NEEDLE

13. PISTON ROD STUD
14. WEAR BAND

FINISH – Black urethane paint

OPTIONS & FEATURES

Smart Cylinder

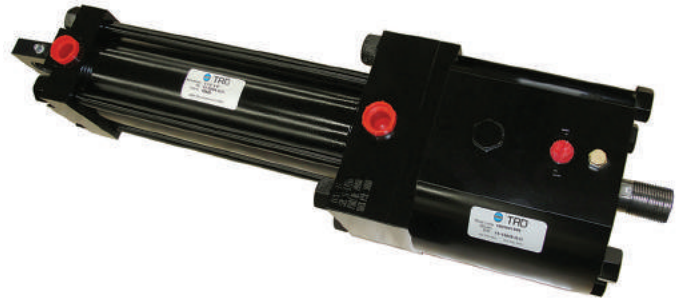
Cylinders are supplied with mounted manifolds, tubing, fittings and gun drilled rods for your servo ready applications using a position transducer. TRD's engineers are ready to help with your specific requirements.



Rod Lock

TRD's floating rod bushing design and Rod Lock option deliver optimized results and superior performance. High holding forces are available in several hydraulic release pressures.

- 1.50" - 8.00" Bore
- 0.625" - 4.00" Rod



Customizable Piston Rods

Every piston rod is made-to-order and typically does not affect our 2-3 day delivery. Get exactly the rod thread, rod extension and rod end design that you need.



Special Construction

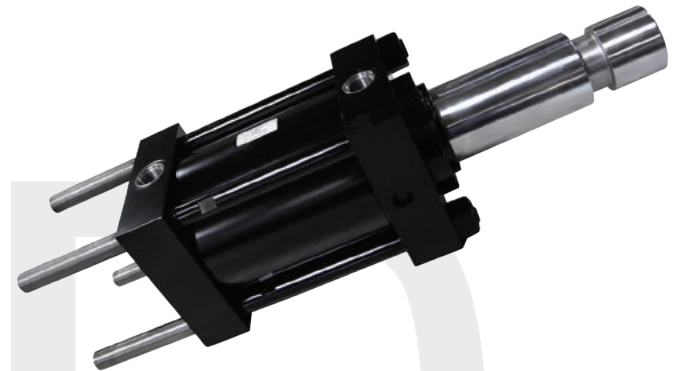
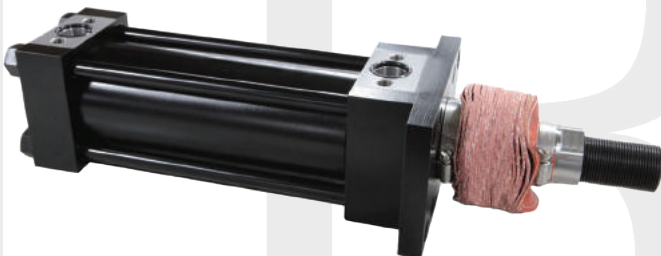
All TRD products are made-to-order, so simply specify exactly what you need. Single, double or special mounts are available. Most cylinders ship in just 2-3 days

For example:

- 3.00" diameter KK10; 3.50" diameter rod
- HH-MX2 mount with tie rods threaded through cap
- Custom AC=9.625
- Delivered in 2-3 day schedule.

Rod Boot

Rod boots provide additional protection to the cylinder rod. They are typically used in dirty environments to help extend cylinder life. Rod boots are made-to-order and available in many different materials.



PRECISION MADE-TO-ORDER HEAVY DUTY CYLINDERS IN 2-3 DAYS

TRD DELIVERIES (F.O.B. Factory)

SERIES

DELIVERY SCHEDULE

MH (Medium-Duty Industrial Hydraulic)	2-3 Days
HH (Heavy-Duty Industrial Hydraulic)	2-3 Days
HH (Heavy-Duty Industrial Hydraulic) with Rod Lock (1.50"-5.00" bores)	3-4 Weeks
HH (Heavy-Duty Industrial Hydraulic) with Rod Lock (6.00"-8.00" bores)	5-6 Weeks
TAS (Heavy-Duty Industrial Pneumatic - 250 PSI Air)	2-3 Days
Rod Clevis, Pins & Mounts, Alignment Couplers	1 Day
Balluff Strokemaster (Quantity of 2-4 cylinders)	3-4 Days
Balluff Strokemaster (Quantity of 5+ cylinders)	7-10 Days
Balluff Micropulse Transducers	10-12 Days
MTS Temposonics	10-12 Days

STANDARD OPTIONS INCLUDED IN ABOVE DELIVERIES

RUSH SERVICE

RUSH SERVICES ARE AVAILABLE FOR ALL TRD PRODUCTS.
CONTACT YOUR LOCAL TRD DISTRIBUTOR FOR DETAILS.



TRD Manufacturing Company

10914 North 2nd Street Machesney Park, Illinois 61115-1400
Phone: 815-654-7775 Fax: 815-654-0690
Email: sales@trdmfg.com www.trdmfg.com

Bimba Manufacturing Headquarters

P.O. Box 68 Monee, Illinois 60449-0068
Phone: 708-534-8544 Toll Free: 800-44-BIMBA Fax: 708-235-2014
Email: cs@bimba.com www.bimba.com

BIMBA BRANDS | ACRO | MEAD | MFD | PNEUMADYNE | TRD

PNEUMATIC • ELECTRIC • HYDRAULIC ACTUATORS FITTINGS — MANIFOLDS — VALVES — AIR PREPARATION — SAFETY & PRODUCTION

Your stocking distributor is:



Worldwide distribution means there is a professional stocking
Bimba distributor nearby ready to service your needs.



BIMBA IS AN ISO 9001 COMPANY