



MSV-1 Stem Actuator



MSV-2 Lever Actuator

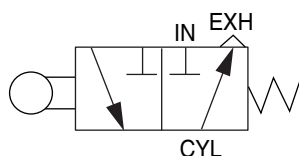


MSV-2A Roller Actuator

Micro Limit Valves

This is a microsize, poppet type, 3 way, normally closed, limit valve. It is primarily designed for momentary contact work that requires very light actuating forces. Therefore, it does not have a 100% seal on the actuating stem. This means that, while the valve is held actuated (and only then), there is a slight bleed to atmosphere around the stem.

Symbol



Features

- Machined brass bar stock body
- Brass internal parts
- Buna-N O'Ring seals (-30° to + 250°F)
- Delrin® roller (180° F max.)
- Plated steel lever arm
- Low operating force

Lever or roller: 40 psi – 1 oz.

100 psi – 2 oz.

Stem: 40 psi – 7 oz.

100 psi – 16 oz.

- Extremely short stroke
.005" to .010" movement of stem
normally provides sufficient pilot volume.
- Operating pressure 30 to 150 psi
- #10-32 ports
- 3 SCFM free flow at 80 psi

Options

- Viton Seal (-15° to + 400°F); Specify suffix **-V**
- Reverse Lever Assembly; Specify suffix **-R**

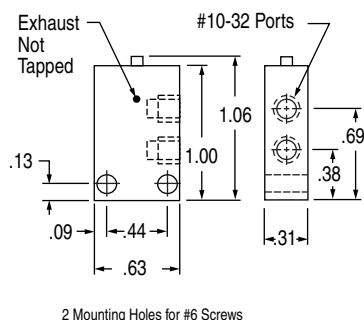
Note

The standard assembly of lever, in relation to ports, is shown in the drawings below. A second lever pivot pin hole allows for the lever to be assembled 180° from standard. Specify **Suffix-R, Reverse lever assembly**, if required.

Model No. MSV-1

Stem Actuator

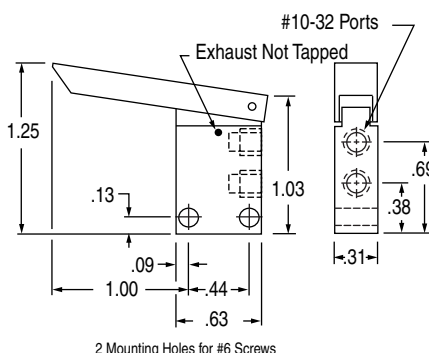
Weight 0.8 oz.



Model No. MSV-2

Lever Actuator

Weight 0.8 oz.



Model No. MSV-2A

Roller Actuator

Weight 0.9 oz.

