

320/420 Valves

320, 420, M420

The 320 and 420 Series Direct-Acting Solenoid Valves have a maximum performance balanced poppet, achieving high flow rates of 1.0 Cv, in a compact design. No air supply lubrication is required. Continuous-Duty molded coil and Class B insulation system provides long hours in tough-working conditions.

320: Multi-purpose universal 2- or 3-way valve.

420: Multi-purpose universal 4-way valve.

420 Series valves also available as a manifold mount, model M420.

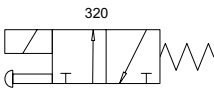
Base Models

- 2- or 3-Way Inline (320), 4-Way Inline (420)
- 4-Way Manifold Mount (M420)

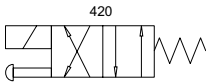
Features and Benefits

- Multi-purpose: normally closed, normally open, selector or divertor, pressure or vacuum, 2-, 3- or 4-way.
- Quiet operation. No AC hum. Low leak rate.
- Electrical connection options include lead wires, conduit connector, or DIN connector.
- Available with UR rating. Contact factory representative.
- Non-locking manual override: Standard. Optional, no override order Code 87.
- Mount in any position – inline, body mounting holes or mounting bracket.

DIRECT-ACTING SOLENOID VALVES



320



420



SPECIFICATIONS FOR 320 AND 420

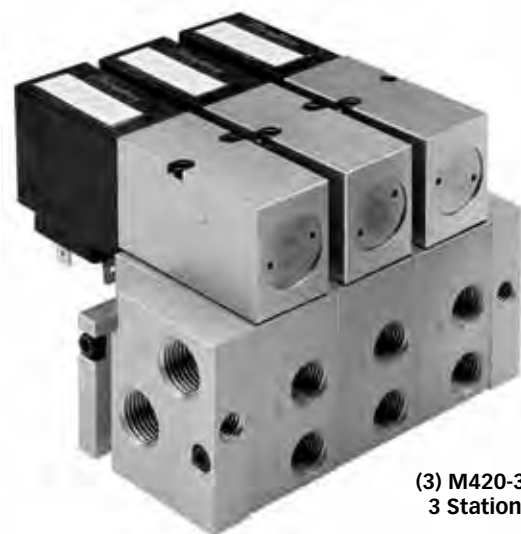
Design Principle:	Pressure Balanced – Spring Return	Temperature Range:	32°F to 125°F
Porting Type:	2-, 3- or 4-Way	Flow @100 PSIG:	60 CFM, 1699 LPM (Cv=1.0)
Port Size:	1/4 PIPE (E320/E420: 1/4 BSP)	Power:	8 W
Media:	Air, Inert Gas	Available Voltages:	12VDC, 24VDC, 24/50/60, 120/50/60, 240/50/60
Pressure Range:	28"Hg to 125 PSIG (see Vacuum, p. 76-77)		

Manifold

M420 series valves are multi-purpose 4-way, base piping types to permit mounting to manifolds and subbases. The high flow (1 Cv) M420 series can be used as 2- or 3-way valves, in normally closed or normally open function, as 4-way valves, or as diverter or selector function.

Subbase: Mount M420 valve to SB-2 subbase with 7-200A end plate kit. Subbase permits convenient valve replacement without disturbing the plumbing.

Manifold: Stack several SB-2 subbases together and with one 7-200A end plate for multiple valve manifold. Mount M420 to each subbase. Ports 1, 2, 3 and 4 located in manifold for convenient valve replacement without disturbing the plumbing.



(3) M420-39 Valves Mounted to
3 Station Manifold Assembly

Manifold Types Available	Overall Size (valves not mounted)	Nominal Dimensions (inch)		
		L	H	D
SB2 Subbase: Extruded Aluminum subbases held together by 7-200A end plates. Delivery ports 1 and 2 located on manifold. Accepts M420 valve model.	Two Valves with End Plates	3.38	2.22	2.25
	Each Additional Valve	1.19		
		Max # of stations	12	
Consult website for exact dimensions and additional manifold configurations.				

How To Order Valves & Manifolds...Pages 97, 98 & 117

HOW TO OBTAIN VALVE SPECIFICATIONS

- Visit www.humphrey-products.com and select "Online Product Guide."
- From the search options provided, choose the valve you want and the details for that product.
- Once completed, select "Spec Sheet" to create a PDF of the valve, which you may save and print at your convenience.

HOW TO FIND A DISTRIBUTOR

- Visit www.humphrey-products.com, select "Find A Distributor," and input your information to locate a distributor nearest you.
- Or, call Customer Service at 1-800-477-8707 for the name and phone number of your local distributor.

HUMPHREY PRODUCTS ARE SOLD WORLD-WIDE
THROUGH AUTHORIZED DISTRIBUTORS 