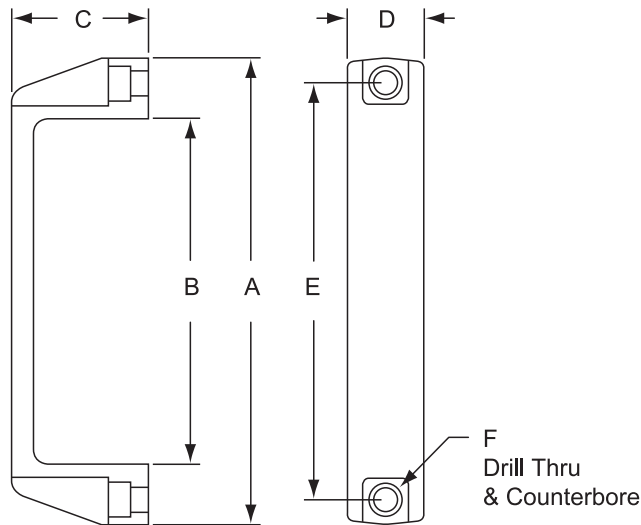


Fractional

Plastic Door Handles



- 10 and 15 Series compatible
- Made of high strength black or red polycarbonate, making the handle light yet durable
- Corrosion-resistant material will stand up to outdoor weather
- Lightweight handle bolts directly onto T-slotted profiles or plastic panels
- See page 599 for panel machining service



Part No.	Size	Color	A	B	C	D	E	F	Lbs.	Compatibility Code*
2060	Large	Black	7.750	6.020	2.000	1.100	7.050	5/16-18 SHCS (2)	.150	8-15, 8-40
2061	Medium	Black	5.470	3.690	1.630	1.020	4.600	5/16-18 SHCS (2)	.095	8-15, 8-40
2062	Small	Black	4.410	2.950	1.420	.830	3.678	1/4-20 SHCS (2)	.055	6-10, 6-25
2880	Large	Red	7.750	6.020	2.000	1.100	7.050	5/16-18 SHCS (2)	.150	8-15, 8-40
2881	Medium	Red	5.470	3.690	1.630	1.020	4.600	5/16-18 SHCS (2)	.095	8-15, 8-40
2882	Small	Red	4.410	2.950	1.420	.830	3.678	1/4-20 SHCS (2)	.055	6-10, 6-25

☒ = 10 Series Compatible Part

Recommended Mounting Hardware (Mount to Profile):

Part No.	Qty	Description
3491	2	1/4-20 x 1/2" SHCS & Economy T-Nut
3455	2	5/16-18 x 3/4" SHCS & Economy T-Nut

Recommended Mounting Hardware (Mount to 1/4" Panel):

Part No.	Qty	Description
3315	2	1/4-20 x 7/8" SHCS w/ Washer & Hex Nut
3473	2	5/16-18 x 1" SHCS w/ Washer & Hex Nut

* See Compatibility Code information on page 351.