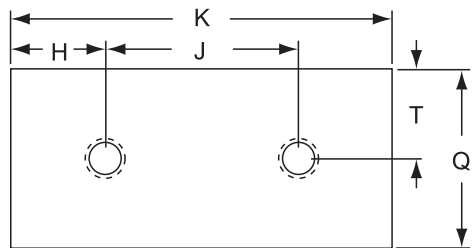
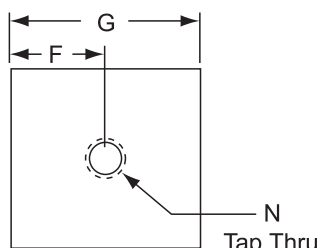
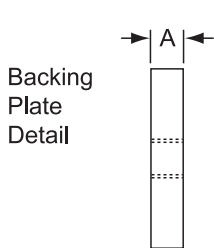
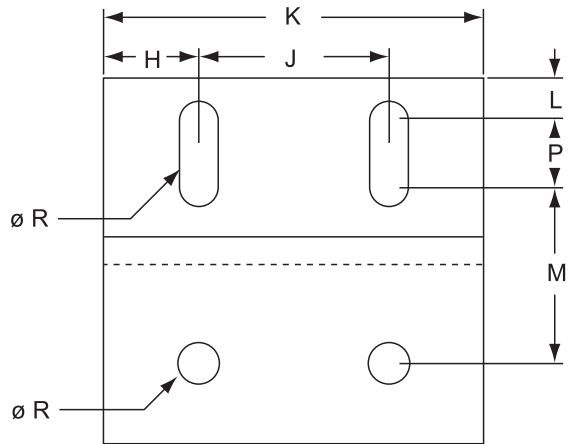
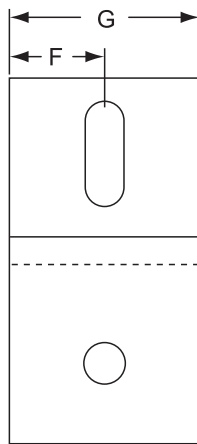
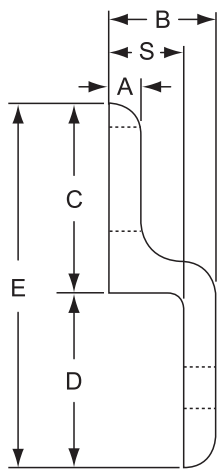
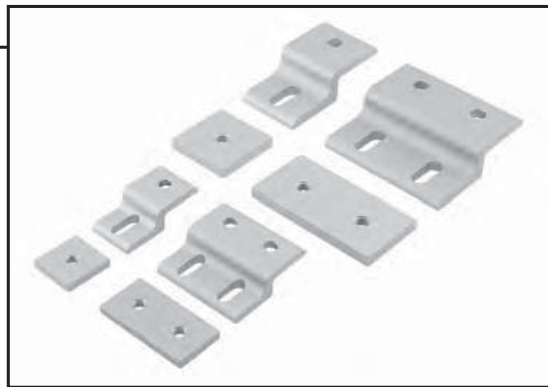




Single Mesh Panel Retainers

- **10 and 15 Series compatible**
- **Made of 6105-T5 clear anodized aluminum**
- **Strongest way to cost-effectively retain wire mesh or expanded metal panels**
- **Simplifies panel installation and removal**
- **Panel is secured when tightened between retainer and its threaded backing plate**



2491 ☒
2436

2494 ☒
2435

Part No.	A	B	C	D	E	F	G	H	J	K	L	M	N	P	Q	R	S	T	Lbs.
2491 ☒	.188	.563	1.000	.938	1.938	.500	1.000	-	-	-	.250	.875	1/4-20	.375	1.000	.255	.375	.500	.055
2436	.250	.840	1.500	1.379	2.879	.750	1.500	-	-	-	.344	1.406	5/16-18	.500	1.500	.328	.590	.750	.175
2494 ☒	.188	.563	1.000	.938	1.938	-	-	.500	1.000	2.000	.250	.875	1/4-20	.375	1.000	.255	.375	.500	.110
2435	.250	.840	1.500	1.379	2.879	-	-	.750	1.500	3.000	.344	1.406	5/16-18	.500	1.500	.328	.590	.750	.350

☒ = 10 Series Compatible Part

Note: Refer to following page for recommended mounting hardware.