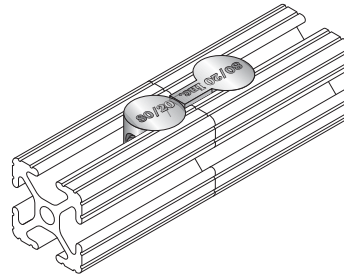
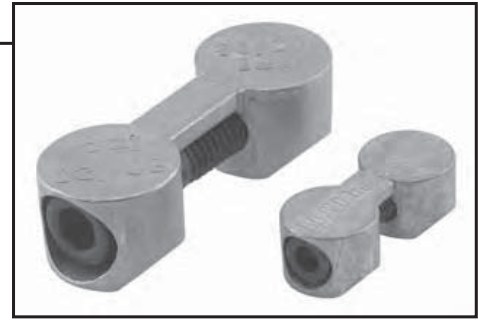
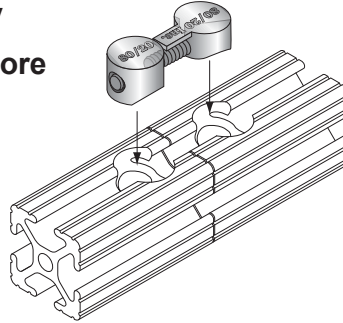


80/20[®] Inc.
The *Industrial Erector Set*[®]
THE STANDARD

Butt Fasteners



- Fastens two profiles end-to-end for maximum strength and near perfect alignment
- Connecting bolt included
- Provides a clean and flush connection where space restrictions apply
- Refer to page 567 for counterbore machining specifications

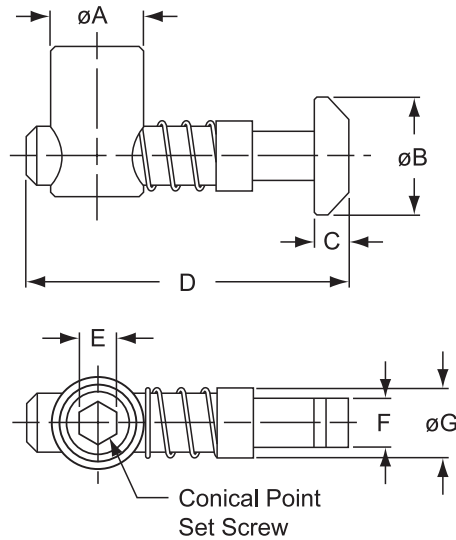


Part No.	Finish	Lbs.
3369 ☒	Zinc Casting w/ Lacquer Finish	.041
3370	Zinc Casting w/ Lacquer Finish	.145

☒ = 10 Series Compatible Part

3

Central Connector
Steel, Zinc-Plated



See page 581 for machining services.

Part No.	Connector Nut Orientation	A	B	C	D	E	F	G	Lbs.	Machining Service	Compatibility Code*
13187	Vertical	.590	.748	.216	2.047	.236	.315	.441	.110	7058	8-15, 8-40
13188	Horizontal							.433			

* See Compatibility Code information on page 152.