

# 80/20<sup>®</sup> Inc.

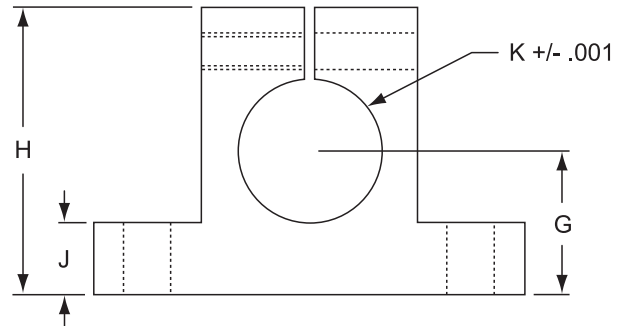
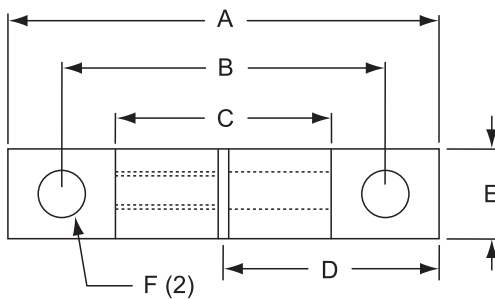
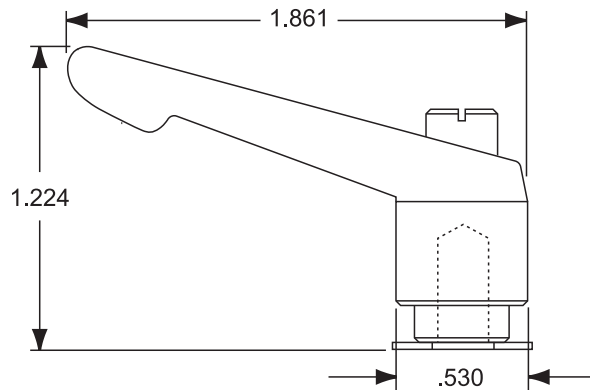
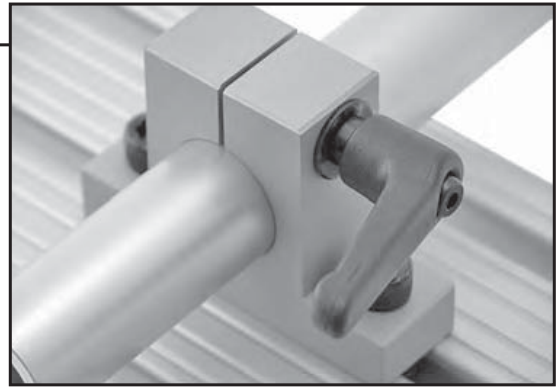
The Industrial Erector Set<sup>®</sup>

## THE STANDARD



### Horizontal Quick Clamp

- 10 and 15 Series compatible
- Adjustable clamping L-handles (included) are black nylon
- Stanchion block is 6105-T5 clear anodized aluminum
- See page 209 for stanchion profiles
- See page 210 or 548 for stanchion tube



10

Part No.	Size	A	B	C	D	E	F	G	H	J	K	Lbs.
5360	1.000"	3.000	2.250	1.500	1.500	.875	.257 Thru	1.062	2.125	.500	1.004	.294
5370	1.000"	3.000	2.250	1.500	1.500	.875	.328 Thru	1.062	2.125	.500	1.004	.294

= 10 Series Compatible Part

Recommended Mounting Hardware (Stanchion to T-Slot):

Stanchion Part No.	Bolt Assembly Part No.	Qty	Bolts Thru	Description
5360	3471	2	J	1/4-20 x 7/8" SHCS, Econ T-Nut and Washer
5370	3470	2	J	5/16-18 x 1" SHCS, Econ T-Nut and Washer