

Tyna-Myte 062 and Tyna-Myte 125 Valves

062E1, 062E2, 062-4E1, 062-4E2, T062E1, T062E2, T062-4E1, T062-4E2; 125E1, 125E2, 125-4E1, T125E1, T125E2, T125-4E1

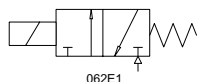
The Humphrey Tyna-Myte Series are available in two flow capacities. The 1/16" orifice 062 Series and the 1/8" orifice 125 Series are available as a 2-, 3- or 4-way configurations. Valves feature a unique direct-acting design that does not require air supply lubrication. Conical poppets move in and out of mating seats; the absence of sliding seals or any metal-to-metal contact provides high reliability and long-cycle life. A controlled stroke length provides fast response and longer poppet life. Tyna-Myte Valves have several mounting options, including inline or the rugged, extruded aluminum TM Series manifolds.

Base Models

- 3-Way Single Solenoid Inline (062E1, 125E1)
- 3-Way Double Solenoid Inline (062E2, 125E2)
- 4-Way Single Solenoid Inline (062-4E1, 125-4E1)
- 4-Way Double Solenoid Inline (062-4E2)
- 3-Way Single Solenoid Manifold Mount (T062E1, T125E1)
- 3-Way Double Solenoid Manifold Mount (T062E2, T125E2)
- 4-Way Single Solenoid Manifold Mount (T062E1-4E1, T125E1-4E1)
- 4-Way Double Solenoid Manifold Mount (T062E1-4E2)

Features and Benefits

- Quiet operation. No AC hum.
- Low leak rate.
- Designed for rugged duty and rapid cycling, and long poppet life.
- Electrical connections include grommet cover or conduit.
- 4-way models offered with optional exhaust speed controllers.



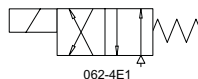
062E1



T062E1



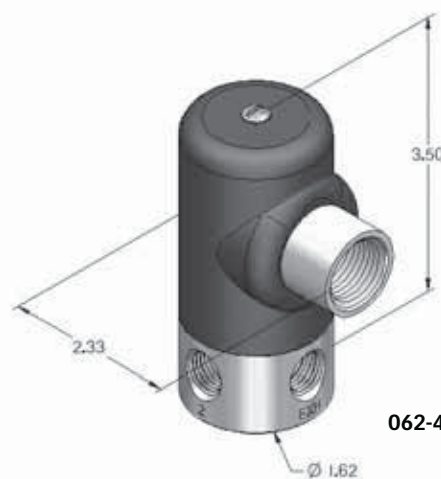
062E1



062-4E1



T062-4E1



062-4E2

SPECIFICATIONS FOR T062E, T062-4E, T125E AND T125-4E

Design Principle: Pressure Unbalanced – Spring Return

Porting Type: 2-, 3- or 4-Way

Port Size: 1/4 PIPE

Media: Air, Inert Gas

Pressure Range: 0-125 PSIG; 0-29.5" HG (see Vacuum, p. 76-77)

Temperature Range: -30°F to 150°F; E2: 30–125 PSIG

Flow @100 PSIG: 062E: 9 CFM, 254 LPM (Cv=0.14)

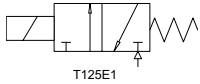
062-4E: 6 CFM, 169 LPM (Cv=0.1)

125E: 17 CFM, 481 LPM (Cv=0.3)

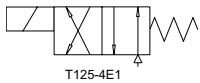
125-4E: 16 CFM, 453 LPM (Cv=0.3)

Power: 6.7 W

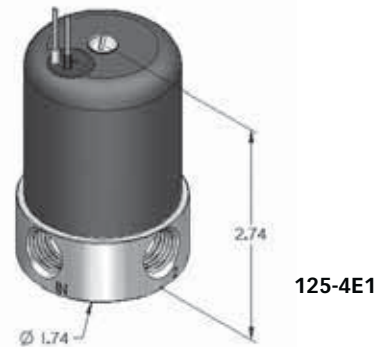
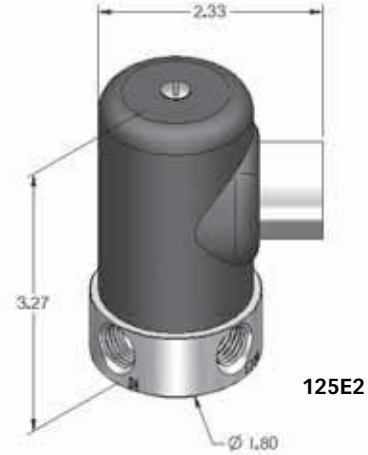
Available Voltages: 12VDC, 24VDC, 24/50-/60, 120/50/60, 240/50/60



T125E1



T125-4E1



Manifold Types Available	Overall Size (valves not mounted)	Nominal Dimensions (inch)		
		L	H	D
TM Manifold: Extruded Aluminum. Delivery ports 1 and 2 located on manifold. Accepts T062, T062-4E1, T125, T125-4E1 valve models.	Two Station (TM2)	4.57	1.06	1.67
	Each Additional station	2.38		
		Max # of stations	12	
Consult website for exact dimensions and additional manifold configurations.				

How To Order Valves & Manifolds...Pages 97, 98 & 117

HOW TO OBTAIN VALVE SPECIFICATIONS

- Visit www.humphrey-products.com and select "Online Product Guide."
- From the search options provided, choose the valve you want and the details for that product.
- Once completed, select "Spec Sheet" to create a PDF of the valve, which you may save and print at your convenience.

HOW TO FIND A DISTRIBUTOR

- Visit www.humphrey-products.com, select "Find A Distributor," and input your information to locate a distributor nearest you.
- Or, call Customer Service at 1-800-477-8707 for the name and phone number of your local distributor.

HUMPHREY PRODUCTS ARE SOLD WORLD-WIDE THROUGH AUTHORIZED DISTRIBUTORS 