

53 STYLE Stocked Coils and Housings

Conduit Housing "C" and Grommet Housing "G"

Non-molded – Class A 221°F (105°C) Rating,
24" Leads of AWG #18 Wire.

Stocked Voltages:

24, 120 and 240 Volt at 50 or 60 Hertz;

6, 12 and 24 Volt DC;

Others available, see Options on page 11.30.

Temperature Range:

0°F (–18°C) to + 104°F (+40°C), ambient.

0°F (–18°C) to + 150°F (+65°C), media.

Typical Response Times:

AC 4 to 8 milliseconds to open or close;

DC 9 to 15 milliseconds to open;

DC 5 to 12 milliseconds to close.

To compute current requirements (±15%) divide factor shown below by voltage

Function	AC Volts, 60 Hertz		DC Volts
	Inrush, Amp	Holding, Amp	Inrush, Amp or Holding, Amp
2 Way NC	13.2 ÷ Volts	7.8 ÷ Volts	7.2 ÷ Volts
2 Way NO	15.2 ÷ Volts	9.0 ÷ Volts	
3 Way NC or NO			
Examples	15.2 ÷ 120 = .13 Amp	9.0 ÷ 120 = .08 Amp	7.2 ÷ 12 = .60 Amp

Male Mini-DIN Housing "F"

Molded – Water Tight - Class A 221°F (105°C) IP65 Coil Rating.

European (DIN) Style – 11 mm spacing.

See page 11.30 for connectors or contact your
local distributor for additional choices.

Can also be connected with individual .25" quick connect terminals.

Stocked Voltages:

24, 120 and 240 Volt at 50 or 60 Hertz;

12 and 24 Volt DC;

Others available, see Options on page 11.30.

Temperature Range:

0°F (–18°C) to + 104°F (+40°C), ambient.

0°F (–18°C) to + 150°F (+65°C), media.

Typical Response Times:

AC 4 to 8 milliseconds to open or close;

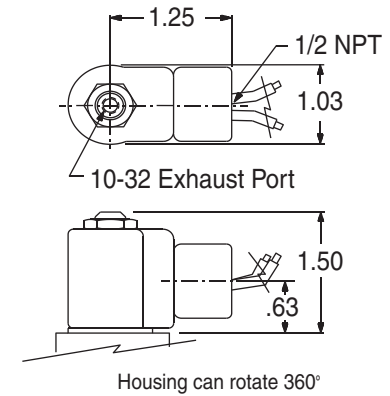
DC 9 to 15 milliseconds to open;

DC 5 to 12 milliseconds to close.

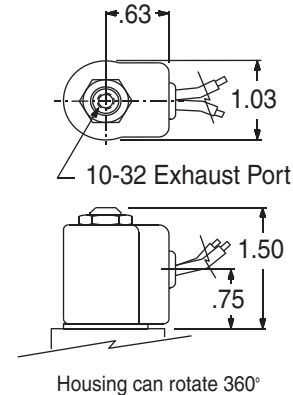
To compute current requirements (±15%) divide factor shown below by voltage.

Function	AC Volts, 60 Hertz		DC Volts
	Inrush, Amp	Holding, Amp	Inrush, Amp or Holding, Amp
2 Way NC	14.4 ÷ Volts	9.7 ÷ Volts	10.4 ÷ Volts
2 Way NO	15.2 ÷ Volts	11.8 ÷ Volts	10.4 ÷ Volts
3 Way NC or NO			
Examples	15.2 ÷ 120 = .13 Amp	11.8 ÷ 120 = .10 Amp	10.4 ÷ 12 = .87 Amp

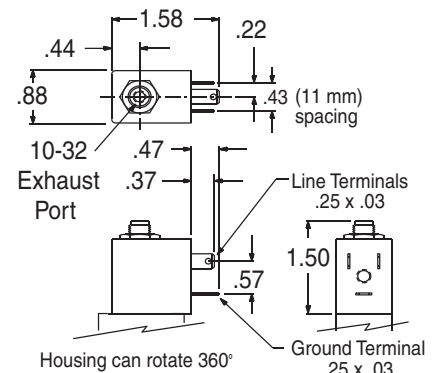
Conduit Housing "C"



Grommet Housing "G"



Male Mini-DIN Housing "F"



Spade terminals accept miniature rectangular quick connect socket (Female DIN style connector, 11 mm spacing) or individual .25" quick connect terminals.

53 STYLE Options for Conduit Housing "C" and Grommet Housing "G"

AC Voltages from 5.4 to 575 in 50 or 60 Hertz.

DC Voltages from 3 to 300.

- Molded Coil Option -M
Water tight, Molded Coil with Class A 221°F (105°C) Rating. Coil is completely molded in epoxy for maximum moisture resistance.

NEMA 1, 2, and 3 when in Conduit "C", or Grommet "G" housing.
- Potted Coil Option -P
Coil is epoxy potted into Conduit "C" housing only. Class F 221°F (105°C) Rating.

It offers maximum moisture and vibration resistance. NEMA 3R, 3S, 4, 4X, 6, 11, 12 & 13.
- High Temperature Option -H
Molded coil with 356°F (180°C) rating.
- Viton Seals
(for media compatibility) Option -V
- Strain Relief Connector Option -Q
- "AN" Connector Option -W
- Splice Box Option -J
- Mounting Bracket Option -R
- Third Wire Ground Option -CC
A CSA requirement.

53 STYLE Options for Male Mini-DIN Housing "F"

AC Voltages from 4.4 to 277 in 50 or 60 Hertz.

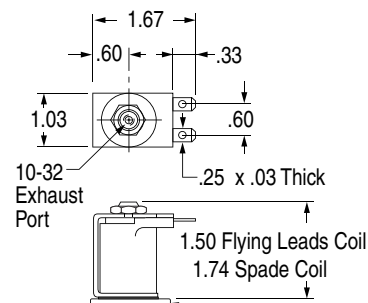
DC Voltages from 3 to 180.

- Viton Seals
(for media compatibility) Option -V

53 STYLE Options for Yoke Housing

- Yoke with Standard coil
(24" flying leads) Option -YB
- Yoke with Molded coil
(24" flying leads) Option -YM
- Yoke with Molded
Spade Terminal and coil Option -KM

Yoke replaces housing for protected and control box applications. Molded coil with two .25" spade terminals for quick assembly and disconnect.



53 STYLE Explosion Proof Option -EP

UL File #E37780

CSA File #LR-26894

For hazardous locations, includes Molded Coil.

UL Class I Div. 1 Groups C & D.

UL Class II Div. 1 Groups E, F & G.

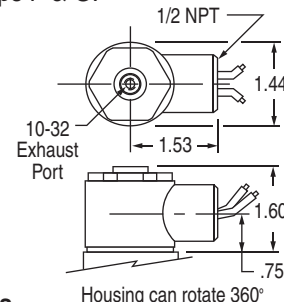
UL Class II Div. 2 Groups A, B, C, D, E & F.

NEMA 7 Class 1 Group D.

NEMA 9 & 9A Class II Groups F & G.

! CAUTION !

To prevent explosion, disconnect electrical circuit before opening enclosure! Keep tightly closed when in operation.



Option -EP Current Factors

AC Volts, 60 Hertz	Inrush Holding
2 Way NC	16.0 7.8
2 Way NO	16.9 10.7
3 Way NC or NO	16.9 10.7
DC Volts	Inrush or Holding
2 Way NC or NO	7.2
3 Way NC or NO	7.2

Divide "Factor" shown above by Volts to find current.
See examples on opposite page.

58 Style

3 Way – Normally Closed – Exhaust to Atmosphere

Temperature Range:

0°F (–18°C) to + 122°F (+50°C), ambient.

0°F (–18°C) to + 122°F (+50°C), media.

Available with or without Push Button Manual Override

#1 Operator

0.9 Watts

Volts – 12 VDC . . . 24 VDC

Amperage Draw – (approximate)73 mA 37 mA

Response time: 9 ms @ 0 psi

0.6 mm Inlet Orifice – 0.8 mm Exhaust Orifice

130 psi Maximum Operating Pressure

#4 Operator

3.5 Watts

Volts – See Chart at Right

Amperage Draw – See Chart at Right

Response time: 8 ms with DC Volts;

3 – 9 ms with AC Volts.

1.0 mm Inlet Orifice – 1.0 mm Exhaust Orifice

145 psi Maximum Operating Pressure

Volts	Hertz	Amperage Draw, mA	
		Inrush	Holding
24	60	252	220
120	60	43	37
12	DC	294	294
24	DC	145	145

58 Style

[#1 (0.9 Watts), or #4 (3.5 Watts)] Operator

Male Micro-DIN, Coil “F”

Molded – Water Tight

Class A 221°F (105°C) IP65 Coil Rating

European (DIN) Style – 9.4 mm spacing

See page 11.32 for connectors or contact your local distributor for additional choices.

58 Style

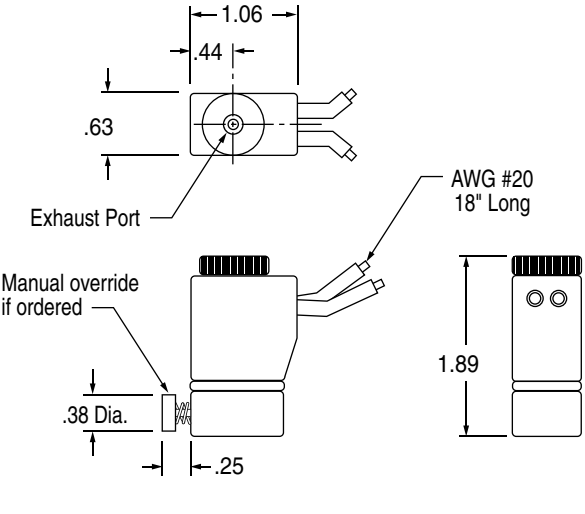
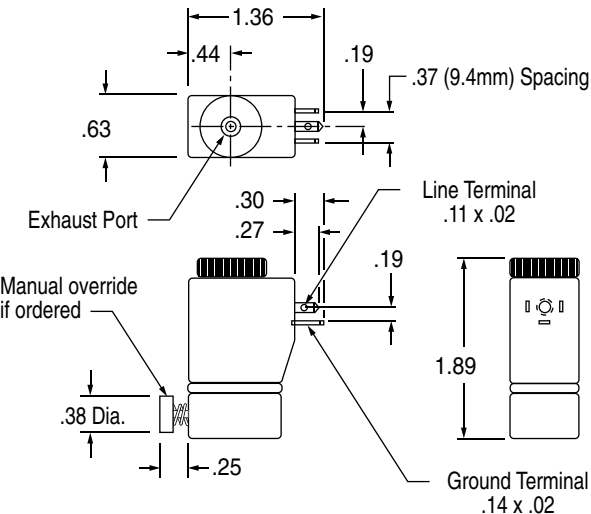
[#1 (0.9 Watts), or #4 (3.5 Watts)] Operator

Wire Leads, Coil “G”

Molded – Water Tight

Class A 221°F (105°C) IP65 Coil Rating

Leadwires – AWG #20, 18 inches long



Solenoid Exhaust Mufflers, #SM-10

for "C" & "G" housings and "F" DIN coil operators. See page 14.1.

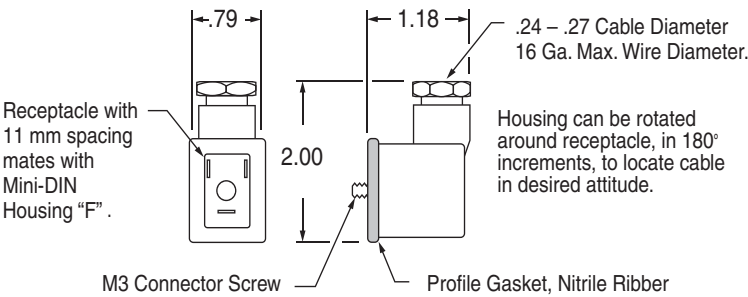
Connectors 53 Style (11 mm spacing)

NEMA 4, IP65
For Male Mini-DIN Housing "F"

Part Number without LED: 122-09-N
Black Housing (300v max. DC, 250v max. AC 50/60 Hz)

Part Number with LED:	Application
122-09-T-A.1-12VDC	12 VDC
122-09-T-A.1-24/60	24 VDC, 12-24 VAC 50/60 Hz
122-09-T-A.1-120/60	48-120 VDC, 100-240 VAC 50/60 Hz

(Transparent Housing allows LED to be seen)



Connectors 58 Style (9.4 mm Spacing)

NEMA 4, IP65
For Male Micro-DIN Housing "F":

Part Number without LED: 192-07-N
Black Housing (250v max. DC or AC 50/60 Hz)

Part Number with LED:	Application
192-07-T-A.1-12/60	12 VDC or VAC 50/60 Hz
192-07-T-A.1-24/60	24 VDC or VAC 50/60 Hz
192-07-T-A.1-120/60	110-240 VDC or VAC 50/60 Hz

(Transparent Housing allows LED to be seen)

