

- Designed to lubricate a single tool, valve, cylinder, air motor, or other air driven device.
- One Oil-Fog lubricator should be provided for each device requiring lubrication
- All around (360°) visibility of the sight-feed dome simplifies installation and adjustment
- Lubricators equipped with 1 and 2 quart (1 and 2 liter) reservoirs can be filled under pressure
- The 2 and 5 U.S. gallon (8 and 20 liter) reservoirs are rated to ASME Pressure Vessel Code, Section VIII



Ordering Information. Models listed have 1-1/2" PTF parallel threads.

Model Number	Reservoir Nominal Size	Reservoir Working Capacity Fluid Ounce (Liter)	Recommended Operating Flow Range** scfm (dm ³ /s)	Weight lbs (kg)
10-028-045	1 quart (1 liter) *	19 (0.56)	110 to 590 (52 to 278)	5 (0.91)
10-028-046	2 quart (2 liter) *	45 (1.33)	110 to 590 (52 to 278)	6 (2.72)
10-028-047	2 U.S. gallon (8 liter)	113 (3.34)	110 to 590 (52 to 278)	16 (7.26)
10-028-048	5 U.S. gallon (20 liter)	316 (9.34)	110 to 590 (52 to 278)	28 (12.70)

* Models with 1 and 2 quart reservoirs must not be located downstream of frequently cycling directional control valves. Models with the 2 and 5 gallon reservoirs may be located downstream of frequently cycling directional control valves.

** At 100 psig (6.9 bar) inlet pressure and pressure drop of 5 psid (0.35 bar).

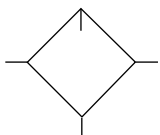
Alternative Models

1 0 - ★ 2 8 - ★ ★ ★ - ★ ★

Threads	Substitute
PTF	0
ISO G parallel	8

Option	Add
Factory installed quick fill nipple	-2J
Factory installed sight feed dome	-8W

ISO Symbol



With Drain

See Section ALE-25 for Accessories



Technical Data

Fluid: Compressed air
 Maximum pressure: 250 psig (17 bar)
 Operating temperature*: 0° to 175°F (-20° to 80°C)
 * Air supply must be dry enough to avoid ice formation at temperatures below 35°F (2°C).
 Start point (minimum flow required for lubricator operation) at 90 psig (6.3 bar)
 inlet pressure: 103 scfm (49 dm³/s)
 Typical flow at 90 psig (6.3 bar) inlet pressure and 5 psig (0.35 bar) pressure drop:
 568 scfm (268 dm³/s)
 Nominal reservoir sizes:

- 1 quart (1 liter)
- 2 quart (2 liter)
- 2 U.S. gallon (8 liter)
- 5 U.S. gallon (20 liter)

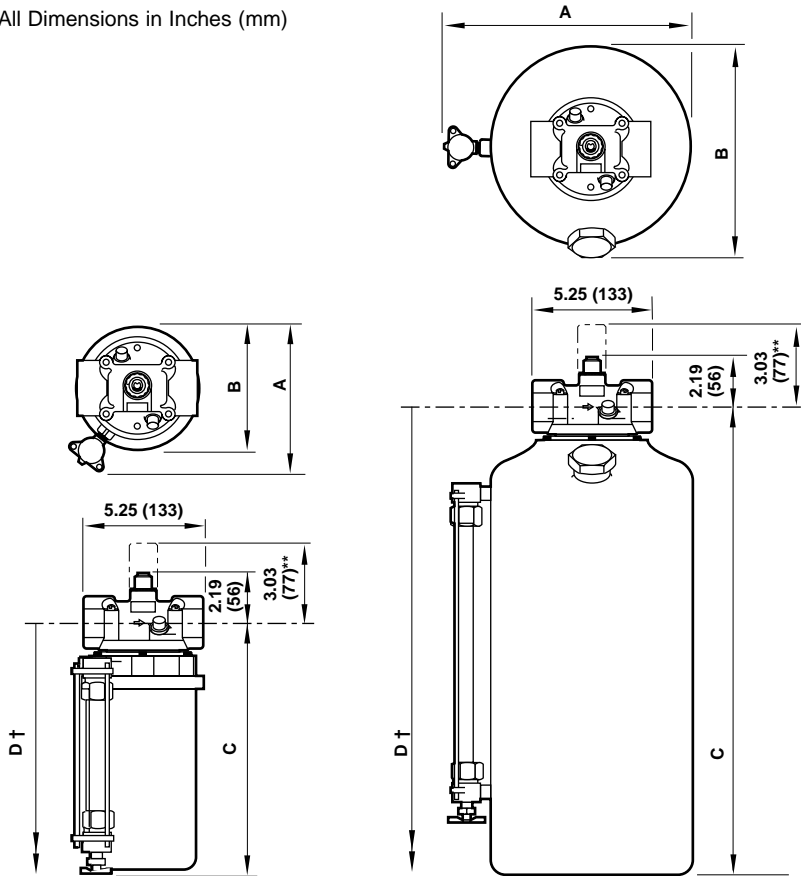
Recommended lubricants: See Section ALE-29.

Materials

- Body: Aluminum
- Reservoir: Steel
- Reservoir liquid level indicator lens: Pyrex
- Sight-feed dome
 - Standard: Transparent nylon
 - Optional: Pyrex and aluminum
- Elastomers: Neoprene and Nitrile

Reservoir	A	B	C	D
1 quart (1 liter)	4.72 (120)	4.06 (103)	8.27 (210)	15 (376)
2 quart (2 liter)	5.28 (134)	4.63 (118)	10.52 (267)	19 (477)
2 gallon (8 liter)	7.81 (198)	7.18 (182)	18.34 (466)	32 (813)
5 gallon (20 liter)	11.81 (300)	11.18 (284)	21.59 (548)	37 (940)

All Dimensions in Inches (mm)

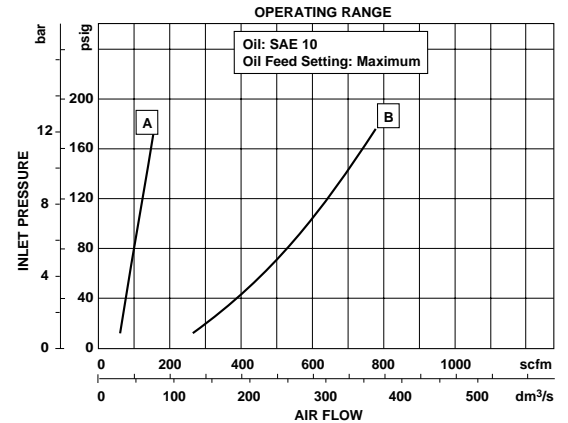


1 and 2 quart (1 and 2 liter) reservoir

2 and 5 gallon (8 and 20 liter) reservoir

** Optional pyrex sight-feed dome.
 † Minimum clearance required to remove bowl.

Typical Performance Characteristics



A: Minimum flow based on oil drip rate of 5 drops per minute.
 B: Maximum flow based on pressure drop of 5 psid (0.35 bar).

Service Kits

Item	Type	Part Number
Liquid level lens kit	1 quart reservoir	2272-02
	2 quart reservoir	2273-04
	2 and 5 gallon reservoir	2274-01
Replacement drain	Manual petcock	684-01

Liquid level lens kit include sight glass, sight glass guards, seals, and hardware.