

**Instrument Filter/Regulator  
Aluminum Model 1/4" PTF**

- Compact instrument units with high performance
- Stable regulation and temperature compensation
- Excellent flow and regulation characteristics



**Ordering Information.** Models listed are relieving type with PTF threads, manual drain, 25 µm element, screw adjustment, 0.6 to 30 psig (0.04 to 2 bar) outlet pressure adjustment range and without gauge.

Port Size	Model Number	Flow† scfm (dm³/s)	Weight lbs (kg)
1/4" PTF	B38-200-B2CA	17 (8)	1.18 (0.53)

† Typical flow 100 psig (7bar) inlet pressure, 15 psig (1 bar) set pressure, and a droop of 1 psig (0.05 bar) from set.

**Alternative Models**

B 3 8 - ★ ★ ★ - ★ ★ ★ ★

Port Size	Substitute
1/4" PTF	2

Type	Substitute
Aluminum	0

Diaphragm	Substitute
Relieving	0
Non relieving	1
Relieving, bracket and nut	2
Non relieving, bracket and nut	3
Relieving with nut	4
Non relieving with nut	5

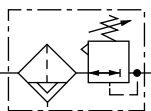
Threads	Substitute
PTF	A
ISO Rc taper	B
ISO G parallel	D
API.LP.INT	K

Outlet Pressure Adjustment Ranges*	Substitute
0.6 to 30 psig (0.04 to 2 bar)	C
1 to 60 psig (0.07 to 4 bar)	F
3.6 to 100 psig (0.25 to 7 bar)	K

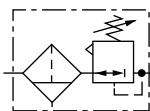
Element	Substitute
5 µm	1
25 µm	2

Drain	Substitute
Manual	B

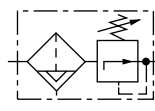
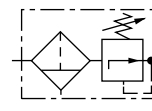
\* Outlet pressure can be adjusted to pressures in excess of, and less than, those specified. Do not use these units to control pressures outside of the specified ranges.

**ISO Symbols**


Automatic Drain, Relieving



Manual Drain, Relieving


 Automatic Drain,  
Non Relieving

 Manual Drain,  
Non Relieving

**See Section ALE-25 for Accessories**



**Technical Data**

Fluid: Compressed air

Maximum pressure

Manual drain: 300 psig (20 bar)

Operating temperature: -40° to 175°F (-40° to 80°C) \*

\* Air supply must be dry enough to avoid ice formation at temperatures below 35°F (2°C).

Particle removal: 5 µm or 25 µm filter element

Air quality: Within ISO 8573-1, Class 3 and Class 5 (particulates)

Typical flow with 100 psig (7 bar) inlet pressure, 15 psig (1 bar) set pressure and a droop of 1 psig (0.05 bar) from set:

17 scfm (8 dm³/s)

Manual Drain

Nominal bowl size:

2.4 fluid ounce (70 ml)

Gauge ports:

1/4" PTF

Materials

Body: Aluminum

Bonnet: Aluminum

Bowl: Aluminum

Adjusting screw: Steel

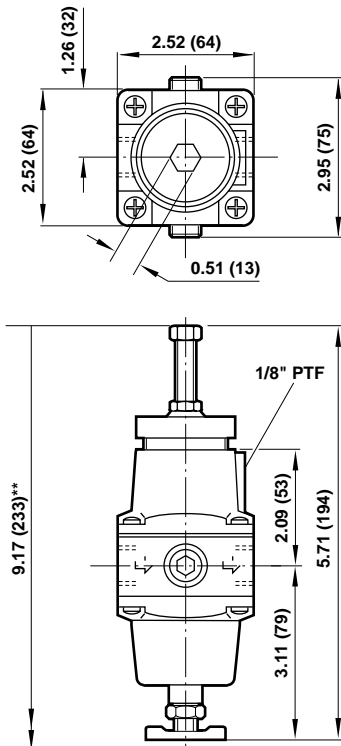
Elements

25 µm: High density polyethylene

5 µm: Ceramic pyrolyth

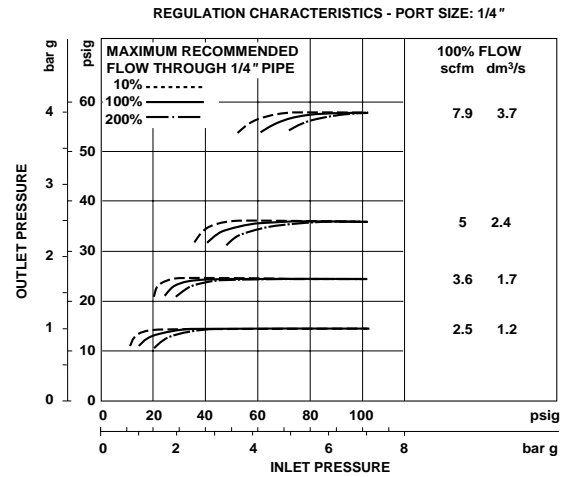
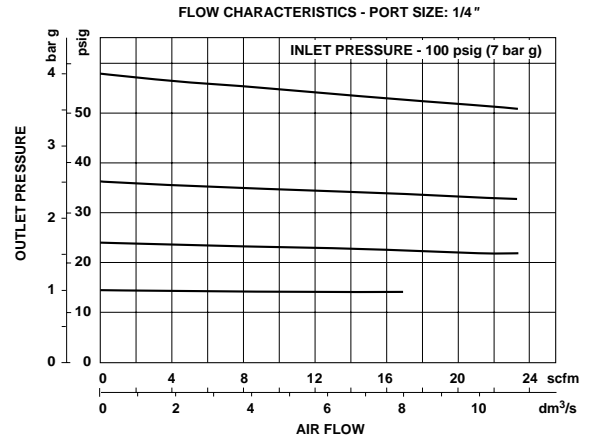
Elastomeric materials: Synthetic rubber

All Dimensions in Inches (mm)



\*\* Minimum clearance required to remove bowl.  
 Panel mounting hole diameter: 1.65" (42 mm)  
 Maximum panel thickness: 0.24" (6 mm)

**Typical Performance Characteristics**



**Service Kits**

Item	Type	Part number
30 psig (2 bar) range	Relieving	R38-100R
	Non relieving	R38-100NR
60 and 100 psig (4 bar and 7 bar) range	Relieving	R38-101R
	Non relieving	R38-101NR

Service kits includes diaphragm assembly, o-ring, valve, valve spring and 8 pan head screws.