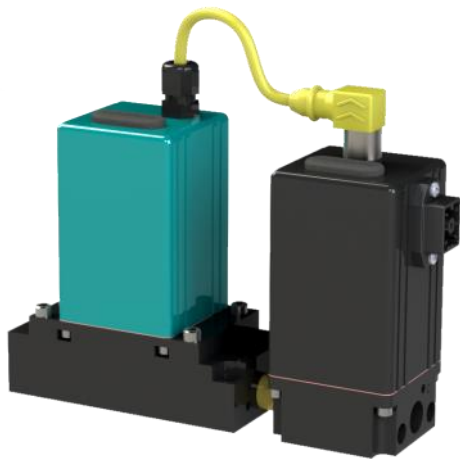


FLOW CONTROL

FQPV2



*Optional Digital Display Available
Oxygen Service Available*

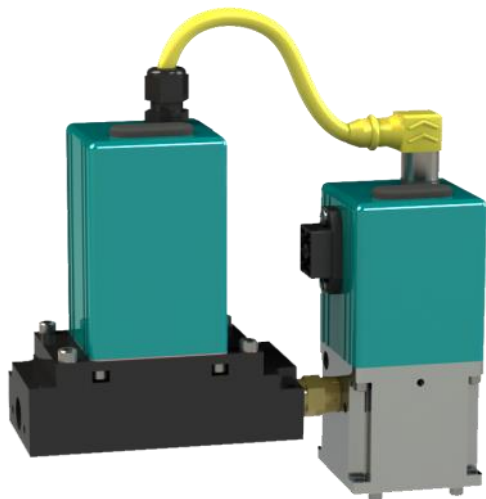
PRESSURE RANGE	up to 150 psig (10 Bar)
ACCURACY REPEATABILITY	±4% F.S. ±0.25% F.S.
MAX FLOW	1 SCFM (28 slpm)
PORTS	¼" to 1½" NPT

The FQPV/F-Series closed loop flow control is built in a compact IP65 rated housing. The FQPV compares the command signal from the customer's controller with feedback from the F-Series flow transducer for active closed loop control. The unit controls the flow of air & a variety of inert gases.

These assemblies are unaffected by mounting position or vibrations to 25Gs. They operate with standard industrial air filtered to 40 micron.

Minimum inlet pressure is 15 psig.

FQB3



*Optional Digital Display Available
Oxygen Service Available*

PRESSURE RANGE	up to 150 psig (10 Bar)
ACCURACY REPEATABILITY	±4% F.S. ±0.25% F.S.
MAX FLOW	25 SCFM (708 slpm)
PORTS	¼" to 1½" NPT

The FQB3/F-Series can be used for closed loop flow control. The FQB3 compares the command signal from the customer's controller with feedback from the F-Series flow transducer for active closed loop control. This series offers a flow monitor and control valve assembly with a <10ms response time.

A variety of command signals are available on the FQB3. The assembly operates with standard industrial air filtered to 40 micron. Saturated air and lubed air will not affect performance. Optional digital display is available.