

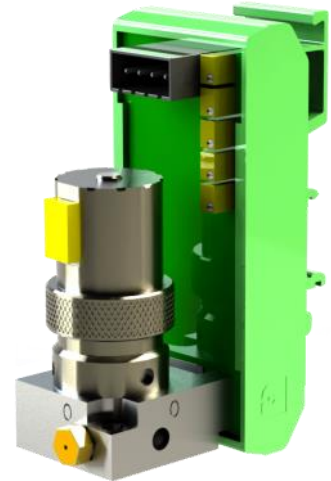
# PROPORTIONAL PRESSURE CONTROL

## SPV1 | SPV2

|                                 |                                  |
|---------------------------------|----------------------------------|
| <b>PRESSURE RANGE</b>           | Full Vacuum to 150 psig (10 Bar) |
| <b>ACCURACY   REPEATABILITY</b> | ±0.2% F.S.   up to ±0.02% F.S.   |
| <b>MAX FLOW</b>                 | 1 SCFM (28 slpm)                 |
| <b>PORTS</b>                    | 1/8" NPT                         |

The SPV is a high resolution electro-pneumatic closed loop proportional pressure control valve. It uses a variable orifice inlet valve which eliminates the digital steps of traditional ON/OFF solenoids.

The field adjustable hysteresis potentiometer allows users to virtually eliminate the dead-band of the control circuit, resulting in superior system resolution. Its small foot print makes it a space saver. Analog monitor output signal is 0-10 VDC.



## QL3

|                                 |                                       |
|---------------------------------|---------------------------------------|
| <b>PRESSURE RANGE</b>           | 0-5 psig through 0-125 psig (8.6 Bar) |
| <b>ACCURACY   REPEATABILITY</b> | ±0.4% F.S.   ±0.05% F.S.              |
| <b>MAX FLOW</b>                 | 25 SCFM (708 slpm)                    |
| <b>PORTS</b>                    | 1/4" NPT                              |

*Available with Modbus RS232 & RS485*

The QL3 electro-pneumatic closed loop pressure control valves are in a compact IP65 rated housing. The QL3 allows high volumes of air to move quickly and precisely using proportional solenoid valves with a unique analog PID circuit. Ideal for use with flow meters, it provides high resolution and smooth pressure control at high and low flow rates and avoids the "steps" prevalent in most feed and bleed I/Ps. The pneumatic output is proportional to the input command signal.

Analog monitor output is standard, select 0-10 VDC or 4-20 mA. Select 0-10 VDC or 4-20 mA differential command signal. Available options include digital display and manifold mount.



*Optional Digital Display Available  
Oxygen Service Available*