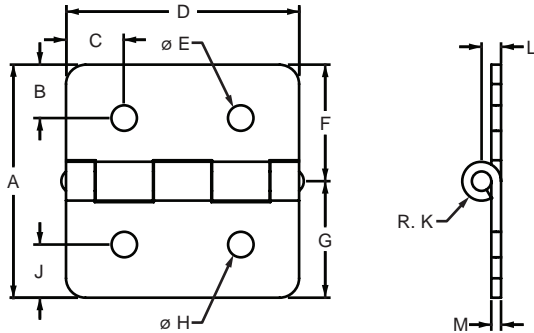


**Part Description:**

The 4 hole - aluminum hinge is commonly used to mount lighter weight doors or two profiles. It is a cost-effective option that is corrosion-resistant, making it useful for outdoor applications where standard hinges may rust or corrode. There are options available that can be used as a transition from 10 to 15 series or 25 to 40 series profiles.



Part No.	Series	Color	Max Load	A	B	C	D	E	F	G	H	J	K	L	M	Weight
2086	10	Clear	40 lb	2.000"	.469"	.500"	2.000"	.257"	1.000"	1.000"	.257"	.469"	.167"	.167"	.078"	.040 lb
2086-Black	10	Black	40 lb	2.000"	.469"	.500"	2.000"	.257"	1.000"	1.000"	.257"	.469"	.167"	.167"	.078"	.040 lb
2085	15 RT	Clear	70 lb	3.000"	.686"	.750"	3.000"	.328"	1.500"	1.500"	.328"	.686"	.250"	.250"	.125"	.135 lb
2085-Black	15 RT	Black	70 lb	3.000"	.686"	.750"	3.000"	.328"	1.500"	1.500"	.328"	.686"	.250"	.250"	.125"	.135 lb
2084	10 to 15	Clear	75 lb	2.500"	.375"	.750"	3.000"	.257"	1.000"	1.500"	.328"	.750"	.250"	.250"	.125"	.118 lb
2084-Black	10 to 15	Black	75 lb	2.500"	.375"	.750"	3.000"	.257"	1.000"	1.500"	.328"	.750"	.250"	.250"	.125"	.118 lb
25-2086	25	Clear	18 kg	50.80mm	11.91mm	12.70mm	50.80mm	6.53mm	25.40mm	25.40mm	6.53mm	11.91mm	4.23mm	4.23mm	1.98mm	.0236 kg
25-2086-Black	25	Black	18 kg	50.80mm	11.91mm	12.70mm	50.80mm	6.53mm	25.40mm	25.40mm	6.53mm	11.91mm	4.23mm	4.23mm	1.98mm	.0236 kg
40-2085	40	Clear	34 kg	76.20mm	17.42mm	19.05mm	76.20mm	8.33mm	38.10mm	38.10mm	8.33mm	17.42mm	6.35mm	6.35mm	3.18mm	.0640 kg
40-2085-Black	40	Black	34 kg	76.20mm	17.42mm	19.05mm	76.20mm	8.33mm	38.10mm	38.10mm	8.33mm	17.42mm	6.35mm	6.35mm	3.18mm	.0640 kg
65-2084	25 to 40	Clear	34 kg	63.50mm	9.53mm	19.05mm	76.20mm	6.53mm	25.40mm	38.10mm	8.33mm	19.05mm	6.35mm	6.35mm	3.18mm	.0542 kg
65-2084-Black	25 to 40	Black	34 kg	63.50mm	9.53mm	19.05mm	76.20mm	6.53mm	25.40mm	38.10mm	8.33mm	19.05mm	6.35mm	6.35mm	3.18mm	.0542 kg

\*The gap distance between profiles for 10 series is .062", 15 series is .120", 25 series is 1.97mm, 40 series is 1.15mm and for series transitions is .125" (2.42mm).

**Material Specifications**

Material	Leaf Alloy	Pin Alloy	Finish	Process
Aluminum	5052-H32/34	6061-T6	Anodize	Die Stamping

**Suggested Hardware (Mount to T-Slot)**

Part No.	Series	Qty.	Bolt	Nut Type	Washer
3386	10	4	1/4-20 x 3/8 FBHSCS	Economy T-Nut	—
3319	15	4	5/16-18 x 1/2 FBHSCS	Economy T-Nut	—
3386	10 to 15	2	1/4-20 x 3/8 FBHSCS	Economy T-Nut	—
3319		2	5/16-18 x 1/2 FBHSCS	Economy T-Nut	—
75-3515	25	4	M6 x 10mm BHSCS	Economy T-Nut	—
75-3525	40	4	M8 x 12mm BHSCS	Economy T-Nut	—
75-3515	25 to 40	2	M6 x 10mm BHSCS	Economy T-Nut	—
75-3525		2	M8 x 12mm BHSCS	Economy T-Nut	—
3961	OR	4	5/16-18 x 2.000" BHSCS	Flanged Hex Nut	3760
3964		4	M8 X 50mm BHSCS	Flanged Hex Nut	3860

