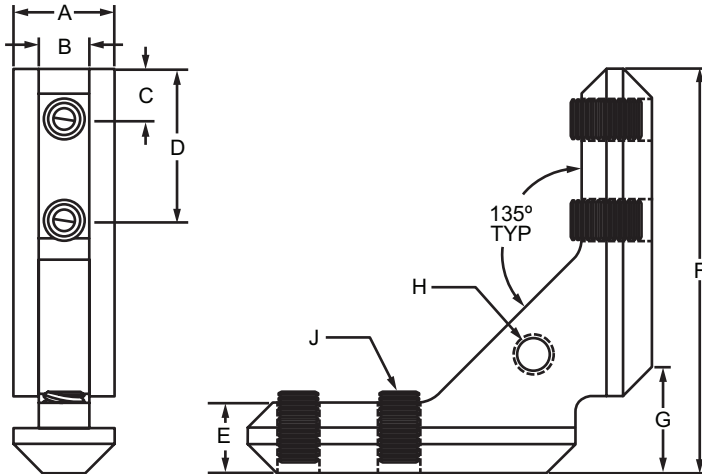


**Part Description:**

The 90 degree inside corner connector is a strong method for creating 90 degree connections between profiles. There are options available in aluminum or zinc. The required hardware is included with the connectors and no machining services are required, making it a cost-effective fastening method. The zinc connector has a tapped hole for panel mounting. **Tip:** The suggested tool to tighten the included hardware is a 1/8" (3.175mm) hex key.



Aluminum



Zinc

Part No.	Series	Material	Finish	A	B	C	D	E	F	G	H	J	Weight
3364	15 40	Aluminum	Anodize	.625"	.313"	.312"	.937"	.436"	2.50"	.655"	—	1/4-20 x 1/2"	.097 lb
3368*	15 40	Zinc	Natural	.625"	.313"	.312"	.937"	.436"	2.50"	.655"	1/4-20 Tap	1/4-20 x 1/2"	.192 lb
40-3368*	40			15.88mm	7.95mm	7.92mm	23.79mm	11.07mm	63.50mm	16.63mm	1/4-20 Tap	1/4-20 x 1/2"	.0821 kg

\*Tap thru available

**90 Degree Inside Corner Connector Assembly**