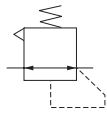


Regulator

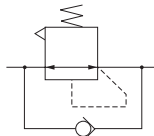
RZ30-F11·RZ31-F11·RZ32-F11
RZ40-F11·RZ41-F11
RZ50-F11·RZ51-F11



Symbol



- Standard
- Low pressure



- Built-in check mechanism

Specifications

Item	Model	Standard	RZ30-F11	RZ40-F11	RZ50-F11
		For low pressure	RZ31-F11	RZ41-F11	RZ51-F11
		Built-in check mechanism	RZ32-F11	—	—
Medium			Air		
Port size			M5×0.8mm, NPT1/8, NPT1/4	NPT1/8, NPT1/4, NPT3/8	NPT1/4, NPT3/8, NPT1/2
Maximum operating pressure	psi		145		
Proof pressure	psi		218		
Operating temperature range (atmosphere and media)	°F		41 to 140 (non-condensation)		
Regulation method			Direct operation type and relief type	Internal pilot type and relief type	
Pressure setting range	psi	Standard/built-in check mechanism	7 to 123		
		For low pressure	7 to 58		
Relief start pressure	psi		Set pressure +7 or less		
Air consumption ^{Note 1}		ft ³ /min (SCFM)	—	0.18 or less	
Materials of major parts	Body		Die cast aluminum alloy		
	Bonnet and adapter		Polyacetal		
	Diaphragm		Base fabric + synthetic rubber		
	Bracket		Steel plate (electroless nickel plated)		
Mass (for standard specifications and largest port size)	lb		0.29	0.37	0.53
Standard equipment			Mounting ring		
Option ^{Note 2}			<input type="checkbox"/> 1.181 in. integrated pressure gauge (assembled), other pressure gauges (included parts), brackets (included parts)		

Note 1: Maximum value of specified range. Air consumption varies depending on the relationship of the primary pressure and the secondary pressure.

Note 2: Refer to the order codes and the specifications for each product starting on page 47 for details on the various types of options.

Order codes

RZ - F11 - - -

NPT thread specifications

Body Model	Port size	1/8	1/4	3/8	1/2	
30	M5	01	02			Standard
40	M5	01	02	03	04	
50			02	03	04	Low pressure
31	M5	01	02			
41		01	02	03	04	Built-in check mechanism
51			02	03	04	
32	M5	01	02			

Bracket
Blank — No bracket
B — With bracket

Pressure gauge specifications

- Blank — No pressure gauge (pressure gauge connection port NPT1/4)
- GP1 — No pressure gauge (pressure gauge connection port NPT1/8)
- GN — No pressure gauge (No pressure gauge connection port)
- G1C — 145 psi specification 1.181 in. integrated pressure gauge
- G4C — 58 psi specification 1.181 in. integrated pressure gauge
- G1 — 145 psi specification ϕ 1.575 in. pressure gauge
- G3 — 44 psi specification ϕ 1.575 in. pressure gauge
- G1S — 145 psi specification ϕ 1.575 in. stainless Bourdon tube pressure gauge
- G3S — 44 psi specification ϕ 1.575 in. stainless Bourdon tube pressure gauge
- GS6 — 145 psi specification digital pressure switch
- GS1A — 145 psi specification 1.969 in. pressure gauge with built-in switch Lead wire For 24 VDC
- GS1B — 145 psi specification 1.969 in. pressure gauge with built-in switch Lead wire For 100 VAC, 200 VAC
- GS1C — 145 psi specification 1.969 in. pressure gauge with built-in switch With DIN connector For 24 VDC
- GS1D — 145 psi specification 1.969 in. pressure gauge with built-in switch With DIN connector For 100 VAC, 200 VAC

Note: Refer to order codes and dimensions on page 43 to 45 for information about the specifications for pressure gauges, pressure gauges with electronic switches, pressure gauges with built-in pressure switches, and purchasing individual parts.

Regulator

● Order codes for brackets only

8Z-BK



Order codes

●Parts for maintenance

●Seal kit (various o-rings, 1 valve assembly, and 1 diaphragm assembly)

SRK-RZ□

Body size

30 — For RZ3□

40 — For RZ4□

50 — For RZ5□

Refer to "Replacing the seal kit, element, and bowl assembly" on page ① and ② for the component parts of the seal kit.

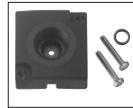
●Pressure port plate

P-FRZ (without pressure gauge connection port)



1 o-ring and
2 small screws

GP-FRZ-F11 (with pressure gauge connection port)

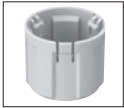


Connection port diameter
Blank NPT1/4
1 NPT1/8

1 o-ring and
2 small screws

●Knob

H-FRZ

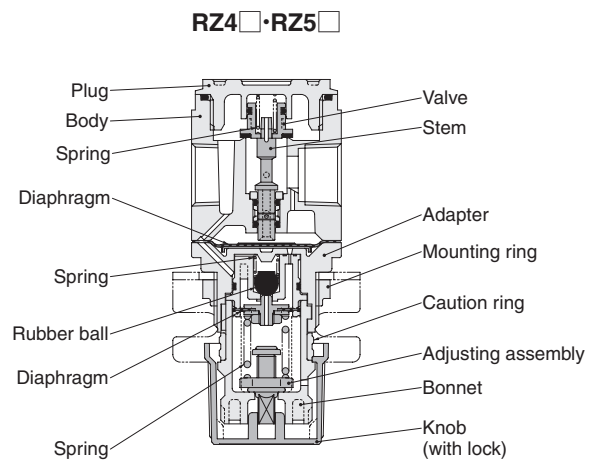
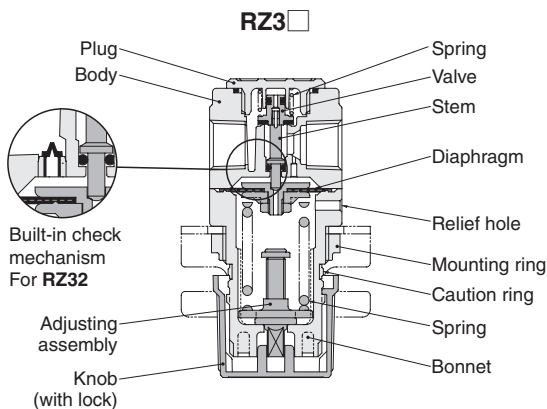


●Mounting ring

R-FRZ



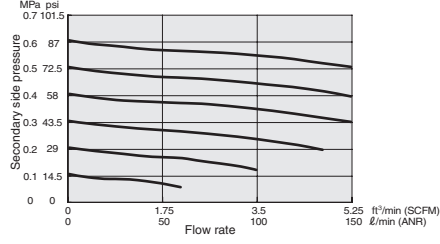
Inner construction



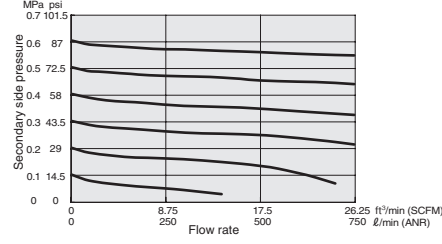
Flow rate characteristics

● Standard and built-in check mechanism

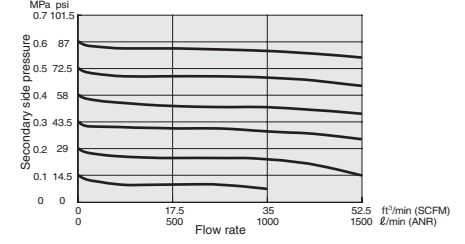
RZ30-F11-M5
RZ32-F11-M5



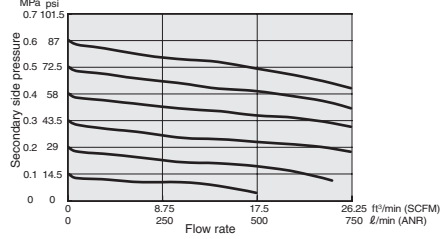
RZ40-F11-01



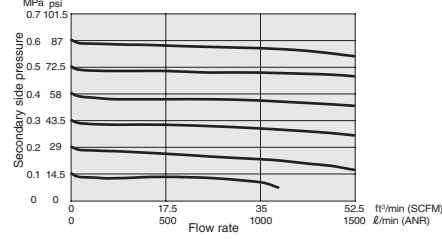
RZ50-F11-02



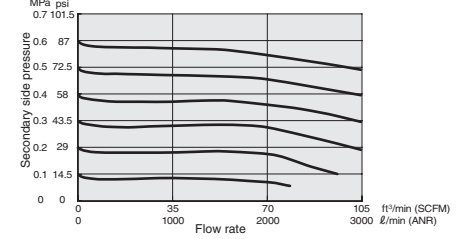
RZ30-F11-01
RZ32-F11-01



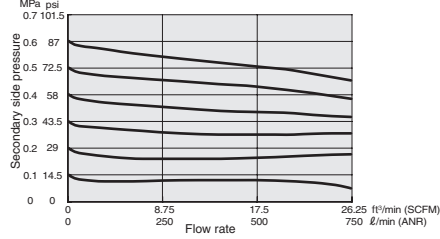
RZ40-F11-02



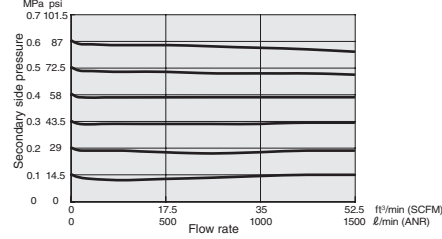
RZ50-F11-03



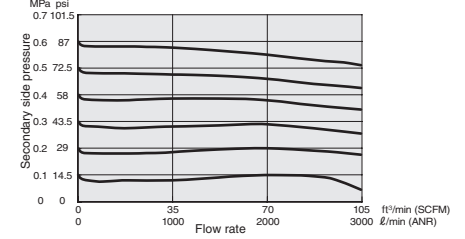
RZ30-F11-02
RZ32-F11-02



RZ40-F11-03



RZ50-F11-04

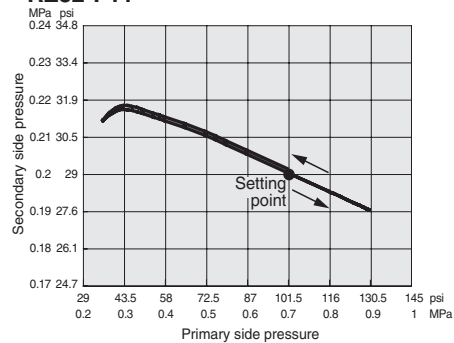


Remarks: Graphs show flow rate characteristics at 0.7 MPa constant pressure on the primary side.

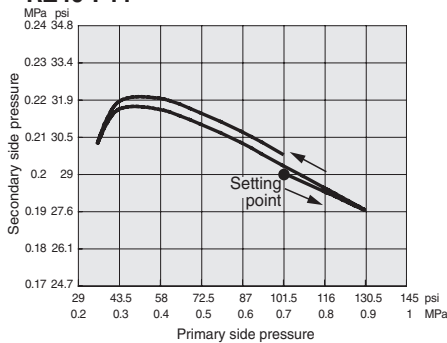
Pressure characteristics

● Standard and built-in check mechanism

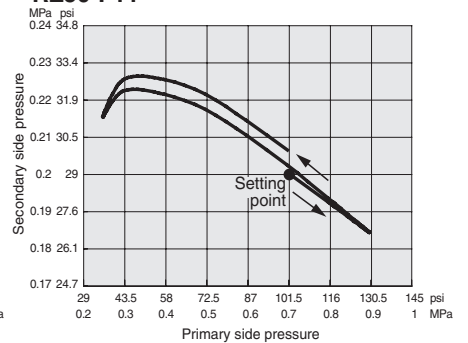
RZ30-F11
RZ32-F11



RZ40-F11

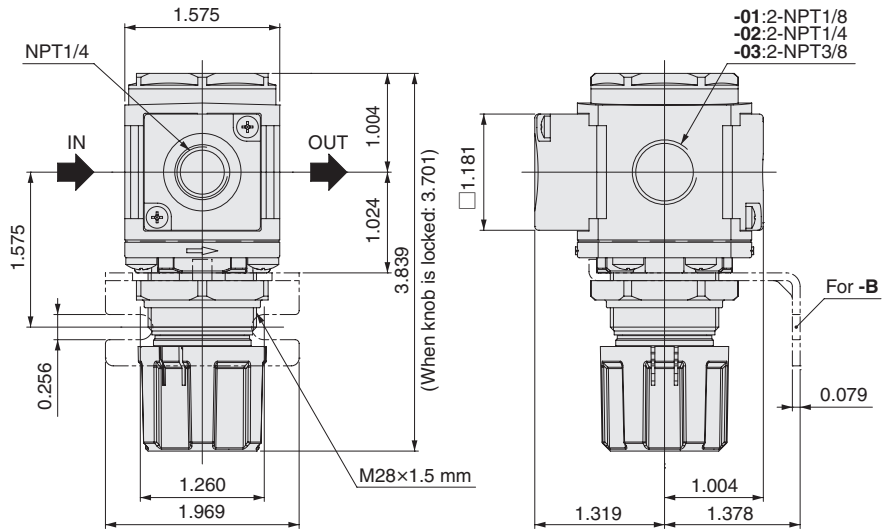


RZ50-F11

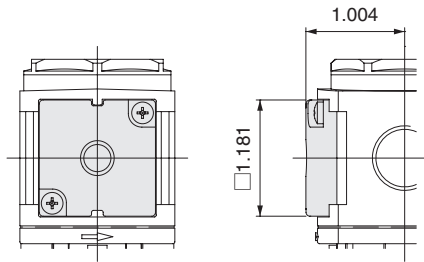


Regulator dimensions in.

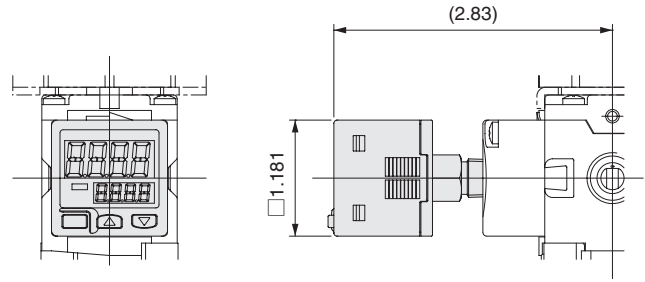
- RZ40-F11
- RZ41-F11



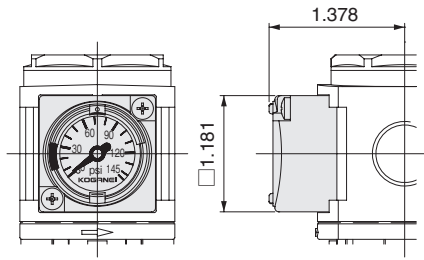
● Pressure gauge options



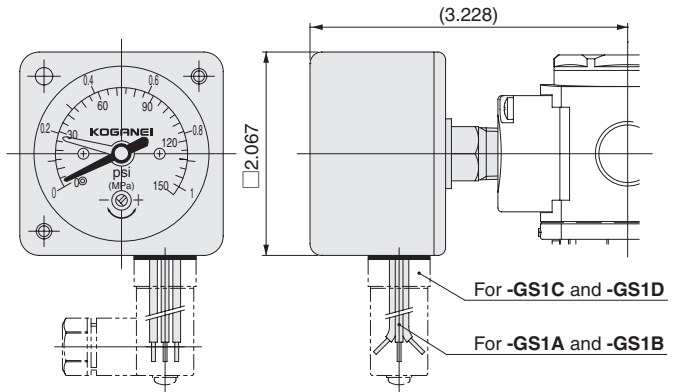
For -GN



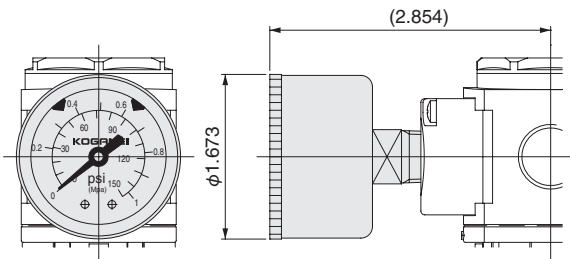
For -GS6



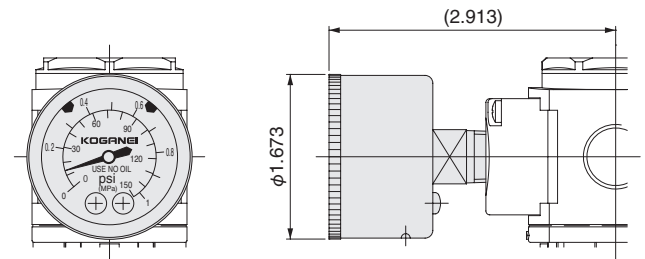
For -G1C and -G4C



For -GS1A, -GS1B, -GS1C, and -GS1D



For -G1 and -G3



For -G1S and -G3S