

The Mini-Myte Series 3- and 4-way solenoid valves are direct operating using a poppet design and limited sliding seals, providing reliable, smooth performance and long service life. Valves can mount in any position (base, body mounting holes or inline) and there are several mounting options, including the rugged, extruded aluminum MMC and MM Series manifolds.

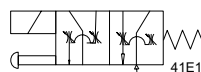
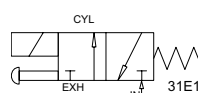
(M)31E1: Universal 3-way, inline or manifold.

(M)41E1: 4-way, inline or manifold.

MC41E1: Manifold 4-way, captive exhaust.

Features and Benefits

- Low leak rate.
- Quiet operation. No AC hum.
- 3-way: Normally closed, normally open or as a selector or diverter, depending upon port selections.
- Furnished with push-in grommet or snap-in 1/2" conduit connector electrical connection.
- Non-locking manual override standard.
- 4-way models include exhaust port speed controllers, standard.



31E1



41E1



31E1



41E1



M41E1, M31E1 MMC-3



M41E1, M31E1 MM-3

Manifold Types Available

MM Manifold: Extruded Aluminum. Common IN, Exhaust via valve. Delivery ports NO and NC located on MANIFOLD. Accepts both M31E1 and M41E1 valve models.

MMC Manifold: Extruded Aluminum. Common IN, Common Exhaust via manifold. Delivery ports NO and NC located on MANIFOLD. Accepts both M31E1 and MC41E1 valve models.

Overall Size (valves not mounted)	Nominal Dimensions (inch)		
	L	H	D
MM Manifold: Two Station (MM2)	2.79	0.75	1.25
Each Additional station	1.25		
Max # of stations	12		
MMC Manifold: Two Station (MMC2)	2.79	1.25	1.25
Each Additional station	1.25		
Max # of stations	12		
Consult website for exact dimensions.			

HOW TO OBTAIN SPECIFICATIONS FOR A PARTICULAR VALVE(S)

- Go directly to www.humphrey-products.com/dynamic/products
- Or, visit www.humphrey-products.com and select "Online Product Guide."
- Once you have followed the steps to get the valve you need, select "Download Spec Sheet." Doing this will create a personalized PDF of the valve, which you may save to your computer and print at your convenience. These spec sheets are helpful when placing your order(s).

HOW TO ORDER HUMPHREY VALVES AND ACCESSORIES

- Go directly to: www.humphrey-products.com/?q=content/find-distributor
- Or, visit www.humphrey-products.com, select "Find A Distributor," and input your information to locate a distributor nearest you.
- Or, call Customer Service at 1-800-477-8707 for the name and phone number of your local distributor.

HUMPHREY PRODUCTS ARE SOLD WORLD-WIDE THROUGH AUTHORIZED DISTRIBUTORS

SPECIFICATIONS

Design Principle:	Pressure Unbalanced – Spring Return
Porting Type:	3- or 4-Way
Port Size:	1/8 PIPE
Media:	Air, Inert Gas
Pressure Range:	0-100 PSIG
Temperature Range:	32° to 130° F
Flow@100 PSIG:	31E1: 6 CFM, 169 LPM (Cv=0.1) 41E1: 2 CFM, 56 LPM (Cv=0.03)
Power:	31E1: 8.5 W 41E1: 7.0 W
Available Voltages:	12VDC, 24VDC, 24/50/60, 120/50/60, 240/50/60