

Vacuum pump MINI X20L, conn. C, NBR seals, X20A5-CN

- Extra vacuum level to 27.9 -inHg
- Small size and low weight
- Use in tightly sealed or non-porous applications



General

Material	ABS, PA, POM, SS, Al, Nitrile (NBR)
Noise level	62 – 66 dBA
Temperature	-4 – 176 °F
Weight	2.12 – 2.61 oz

Performance

Feed pressure, max.	102 psi
---------------------	---------

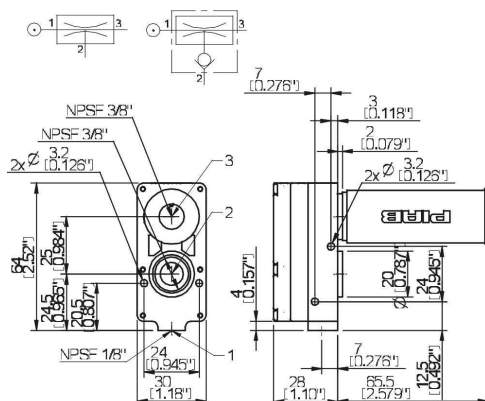
Vacuum flow

Feed pressure psi	Air consumption scfm	Vacuum flow (scfm) at different vacuum levels (-inHg)										Max vacuum -inHg
		0	3	6	9	12	15	18	21	24	27	
58	3.39	4.03	2.12	1.06	0.93	0.81	0.64	0.53	0.36	0.21	0.04	27.5

Evacuation time

Feed pressure psi	Air consumption scfm	Evacuation time (s/cf) to reach different vacuum levels (-inHg)									Max vacuum -inHg
		3	6	9	12	15	18	21	24	27	
58	3.39	1.56	5.66	11.3	18.4	27.5	39.6	53.8	76.5	144	27.5

Dimensional drawings



Values specified in the data sheet are tested at:

Room temperature	(20°C [68°F] ± 3°C [5.5°F])
Standard atmosphere	(101.3 [29.9 inHg] ± 1.0 kPa [0.3 inHg])
Relative humidity	0-100%
Compressed air quality	DIN ISO 8573-1 class 4

Spare parts

	Part no.
Seal kit MINI 5-28, NBR	32.01.097

Accessories

	Part no.
Seal kit MINI 5-28, EPDM	32.01.097E
Seal kit MINI 5-28, Viton®	32.01.097V