

# ASEPTIQUIK® STC SERIES CONNECTOR



**AseptiQuik® STC Connectors** integrate the AseptiQuik® sterile connector and the Steam-Thru® II SIP connector, giving manufacturers even greater flexibility for hybrid stainless steel and single-use processing. The AseptiQuik STC connector combines either an AseptiQuik G or AseptiQuik C sterile connector with a Steam-Thru II connection that can be mounted directly to a stainless steel vessel via a sanitary termination. AseptiQuik STC connectors utilizing an AseptiQuik G sterile connector offer a genderless design, simplifying system integration at the aseptic connector end. AseptiQuik STC connectors utilizing an AseptiQuik C sterile connector allow system designers to incorporate a keyed female-to-male connection at the aseptic connector end.

The union of the two connectors into a single unit through a sanitary clamp allows an AseptiQuik sterile connection to be steamed on to stainless equipment via SIP. After the SIP cycle, a wide range of single-use systems can be connected. The SIP process can be done in advance allowing a quick and easy sterile connection to the AseptiQuik half without having to wait 30-60 minutes for SIP prior to harvest.

## FEATURES

AseptiQuik design

Genderless design

Innovative three-port steam design

Robust construction

Patented steam valve design

Sanitary interface between the two connectors

CPC Click

Market availability

## BENEFITS

Innovative three-step connection process reduces risk of operator error

Eases integration of single-use systems with universal mating between AseptiQuik G Connectors

Allows a true steam-through SIP process which eliminates "dead legs"

Repeatable and reliable performance with no additional hardware required

Allows sterile connection and disconnection to stainless equipment and permits a high media flow rate.

More secure connection than tubing with cable ties

Audible confirmation of assembly steps

Open access through multiple supply chain partners

## Specifications ● ● ●

### PRESSURE:

**Steam position:** Up to 35 psi, 2.4 bar

**Flow position:** Up to 20 psi, 1.4 bar

### TEMPERATURE:

**Steam position:**

Up to 275°F (135°C) for 60 minutes

**Flow position:** 39°F to 104°F (4°C to 40°C)

### STERILIZATION:

**Gamma:** Up to 50kGy irradiation

**AutoClave:** High Temp (HT) version:

Up to 266°F (130°C) for 30 minutes (AQSTC)

Up to 266°F (130°C) for 60 minutes (AQGSTC)

**Note:** A slight clockwise rotation of the clamp nut may be needed after autoclave.

### MATERIALS:

**Main Components:**

**AseptiQuik** - Polycarbonate (white),  
USP Class VI, ADCF

**Steam-Thru II** - Polysulfone (amber tint), USP  
Class VI, ADCF

**Seals:** Silicone (clear), platinum-cured,  
USP Class VI, ADCF

**Pull Tabs:**

Polycarbonate (blue, standard version),  
USP Class VI, ADCF

Polycarbonate (white, HT version),  
USP Class VI, ADCF

**Caps:** Polypropylene (clear), USP Class VI, ADCF

**Membrane:**

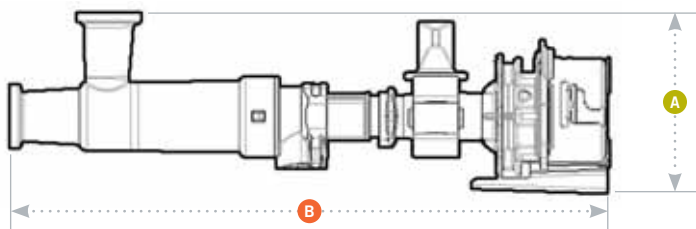
Polyethylene (standard version), USP Class VI,  
ADCF

Hydrophobic polyethersulfone (HT versions), USP  
Class VI, ADCF, PTFE strip sticker

**Clamp:** Nylon 66 (white),  
USP Class VI

*Note: Mates with  
gendered and  
genderless AseptiQuik  
connectors.*

# ASEPTIQUIK® STC SERIES DIMENSIONS



- A** = Height/Diameter
- B** = Total Length
- C** = Actuated Length

Mates with  
gendered  
male and female  
AseptiQuik  
Series.

## Coupling Bodies

### • POLYCARBONATE with Blue Pull Tabs



**TERMINATION**  
3/4" X 3/4" SANITARY STEAM-THRU II  
WITH ASEPTIQUIK BODY

3/4" X 1-1/2" SANITARY STEAM-THRU II  
WITH ASEPTIQUIK BODY (PICTURED)

PART NO.	<b>A</b>	<b>B</b>	<b>C</b>
AQSTC2330900	2.78 (70.6 mm)	9.25 (235 mm)	8.42 (213.9 mm)
AQSTC2331000	2.78 (70.6 mm)	9.25 (235 mm)	8.42 (213.9 mm)

### • POLYCARBONATE HT with White Pull Tabs

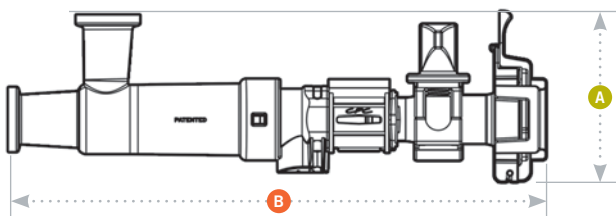


**TERMINATION**  
3/4" X 3/4" SANITARY STEAM-THRU II  
WITH ASEPTIQUIK BODY (PICTURED)

3/4" X 1-1/2" SANITARY STEAM-THRU II  
WITH ASEPTIQUIK BODY

PART NO.	<b>A</b>	<b>B</b>	<b>C</b>
AQSTC2330900HT	2.78 (70.6 mm)	9.25 (235 mm)	8.42 (213.9 mm)
AQSTC2331000HT	2.78 (70.6 mm)	9.25 (235 mm)	8.42 (213.9 mm)

# ASEPTIQUIK® G STC SERIES DIMENSIONS



- A** = Height/Diameter
- B** = Total Length
- C** = Actuated Length

Mates with  
genderless  
AseptiQuik G  
Series.

## Coupling Bodies

### • POLYCARBONATE with Blue Pull Tabs



**TERMINATION**  
3/4" X 3/4" SANITARY STEAM-THRU II  
WITH GENDERLESS ASEPTIQUIK G BODY

3/4" X 1-1/2" SANITARY STEAM-THRU II  
WITH GENDERLESS ASEPTIQUIK G BODY

PART NO.	<b>A</b>	<b>B</b>	<b>C</b>
AQGSTC2330900	3.05	8.26	7.36
AQGSTC2331000	3.05	8.26	7.36

### • POLYCARBONATE HT with White Pull Tabs



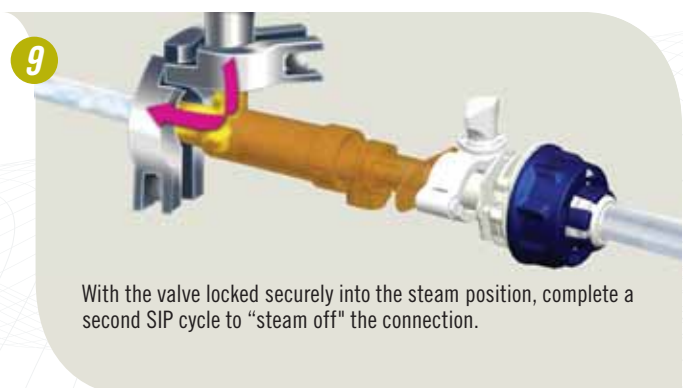
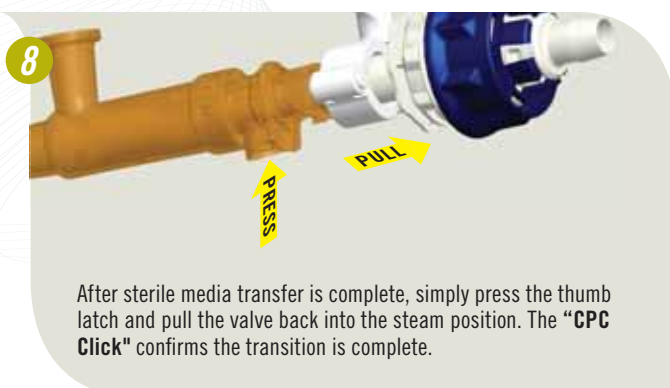
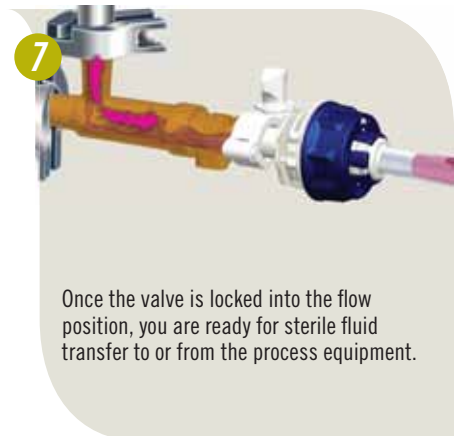
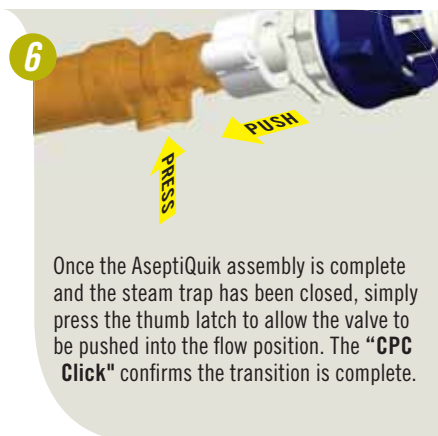
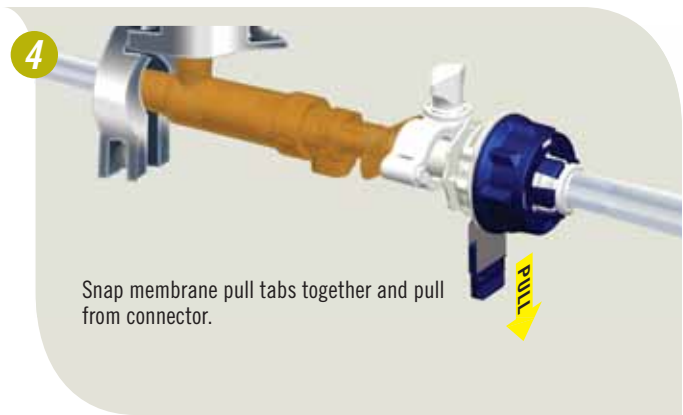
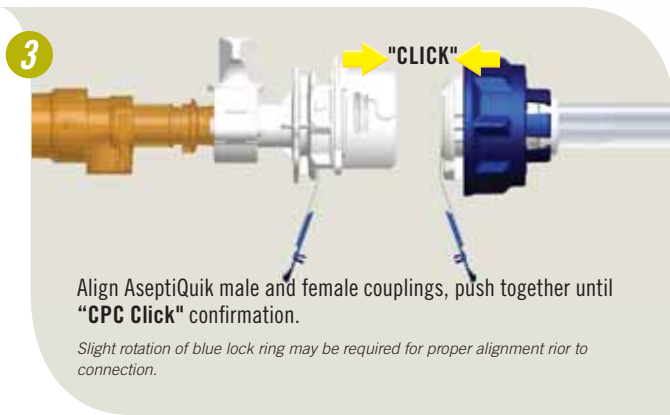
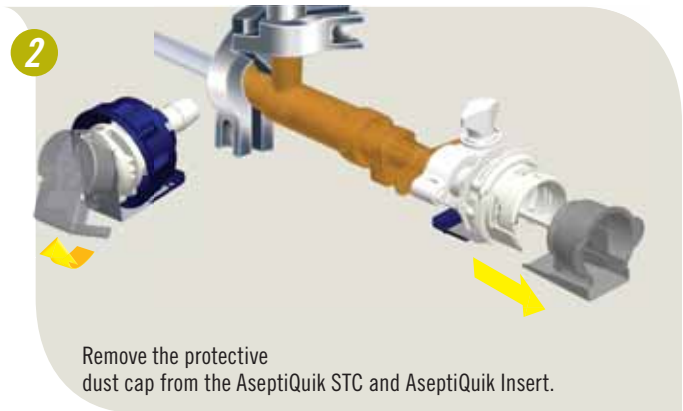
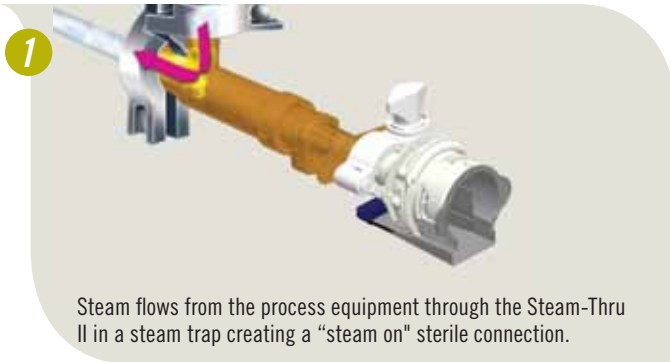
**TERMINATION**  
3/4" X 3/4" SANITARY STEAM-THRU II  
WITH GENDERLESS ASEPTIQUIK G BODY

3/4" X 1-1/2" SANITARY STEAM-THRU II  
WITH GENDERLESS ASEPTIQUIK G BODY

PART NO.	<b>A</b>	<b>B</b>	<b>C</b>
AQGSTC2330900HT	3.05	8.26	7.36
AQGSTC2331000HT	3.05	8.26	7.36

# ASEPTIQUIK® STC SERIES ASSEMBLY PROCEDURE

## CLICK-PULL-TWIST Assembly Procedure



# ASEPTIQUICK® G STC SERIES ASSEMBLY PROCEDURE

## FLIP-CLICK-PULL Assembly Procedure

