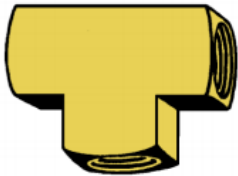


NUMBERING SYSTEM

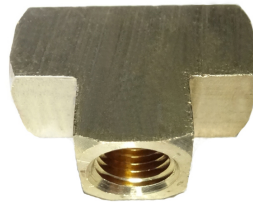
FITTINGS TUBE TO TUBE		FITTINGS TUBE TO PIPE		FITTINGS TUBE TO PIPE		FITTINGS TUBE TO PIPE	
A	1/8	A	1/8 X 1/8	DE	5/16 X 3/8	HJ	5/8 X 3/4
AA	5/32	AS	1/8 X 1/16	E	3/8 X 1/8	J	3/4 X 1/2
B	3/16	AA	5/32 X 1/8	EE	3/8 X 1/4	JJ	3/4 X 3/4
C	1/4	AAS	5/32 X 1/16	EEE	3/8 X 3/8	MF	7/8 X 1/2
D	5/16	B	3/16 X 1/8	EF	3/8 X 1/2	MJ	7/8 X 3/4
E	3/8	BB	3/16 X 1/4	EJ	3/8 X 3/4	MN	7/8 X 1"
F	1/2	C	1/4 X 1/8	FC	1/2 X 1/4	NF	1" X 1/2
G	7/16	CC	1/4 X 1/4	F	1/2 X 3/8	NJ	1" X 3/4
H	5/8	CE	1/4 X 3/8	FF	1/2 X 1/2	NN	1" X 1"
J	3/4	CF	1/4 X 1/2	FJ	1/2 X 3/4		
M	7/8	D	5/16 X 1/8	HE	5/8 X 3/8		
N	1"	DD	5/16 X 1/4	H	5/8 X 1/2		

NOTICE: ALL OF THE PRODUCTS SOLD BY COUPLINGS COMPANY, INC. ARE FOR PROFESSIONAL USE ONLY. BEFORE USING ANY PRODUCT IN THIS CATALOG, CUSTOMER SHALL DETERMINE THE SUITABILITY OF THE PRODUCT FOR ITS INTENDED PURPOSE. CONSULT PAGE 48R FOR TERMS & CONDITIONS.

101S - TEE EXTRUDED



CAT. NO.	FEMALE PIPE
101SA	1/8
101SC	1/4
101SE	3/8
101SF	1/2
101SJ	3/4



Item	Description	PRODUCT SHIP WEIGHT	Additional Notes	Material	Thread size
101SA	1/8 Female Pipe Tee	38(Grams)	Extruded	Brass Extrusion	1/8-27 (All Ends)
101SC	1/4 Female Pipe Tee	75(Grams)	Extruded	Brass Extrusion	1/4-18 (All Ends)
101SE	3/8 Female Pipe Tee	86(Grams)	Extruded	Brass Extrusion	3/8-18 (All Ends)
101SF	1/2 Female Pipe Tee	183(Grams)	Extruded	Brass Extrusion	1/2-14 (All Ends)
101SJ	3/4 Female Pipe Tee	308(Grams)	Extruded	Brass Extrusion	3/4-14 (All Ends)