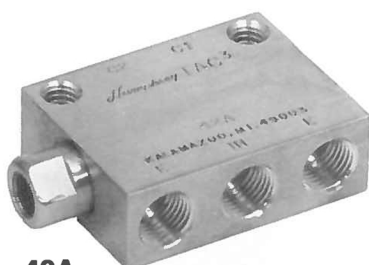


# Humphrey TAC<sup>3</sup> Air-Piloted Valves

Humphrey TAC<sup>3</sup> air-piloted valves feature Delrin sleeve construction to reduce friction for smooth performance and long service life. Single air-pilot models employ a mechanical spring and a patented air spring to return the main stem. Double air-pilot models maintain the last position automatically, preventing equipment damage when pressure is interrupted.

TAC<sup>3</sup> air-piloted valves are 4-way, 5-port, 2-position valves, having a common inlet and separate exhausts. Cylinder port #1 is normally open; cylinder port #2 is normally closed. These valves can be mounted in any position with two ¼-inch screws or directly in-line.



## 42A

Model 42A is a single air-pilot valve with air/spring return.

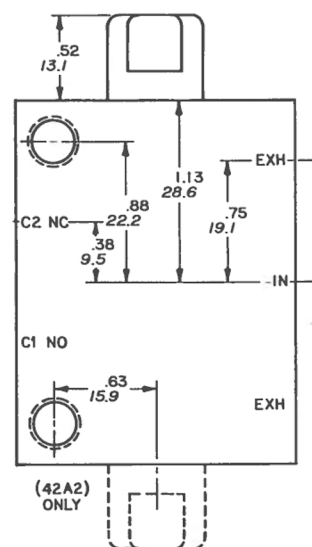


## 42A2

Model 42A2 is a double air-pilot valve that maintains position after a momentary air pilot. Position is maintained even if all pressure is removed.



## 42A/2



## Specifications

**MEDIA:**  
Compressed Air (Consult factory for others)

**PRESSURE RANGE:**  
0 to 125 psig (0 to 8.6 bars)

**TEMPERATURE RANGE:**  
-20 to 180°F (-28.9 to 82.2°C)

**OPERATING SPEEDS:**  
To 600 CPM

**MATERIALS:**  
Brass, Stainless Steel, Delrin, Buna N

**LUBRICATION** ..... Recommended  
**FILTRATION** ..... Recommended,  
40 Microns Minimum

## Air Flow to Atmosphere

| MODEL | 25 PSIG<br>CFM | (1.7 BARS)<br>LPM | 125 PSIG<br>CFM | (8.6 BARS)<br>LPM | ACTUAL<br>LBS | KGS  |
|-------|----------------|-------------------|-----------------|-------------------|---------------|------|
| All   | 10.0           | 283.0             | 39.0            | 1103.7            | 0.65          | 0.30 |

## Weight

| VALVED PRESSURE |         | 25 psig | 1.7 bars | 50 psig | 3.5 bars | 100 psig | 7.0 bars |
|-----------------|---------|---------|----------|---------|----------|----------|----------|
| PILOT PRESSURE  |         |         |          |         |          |          |          |
| MODEL           | 42A     | 22.6    | 1.5      | 26.9    | 1.8      | 37.6     | 2.5      |
|                 | 42A2/PA | 6.0     | 0.4      | 6.6     | 0.4      | 7.6      | 0.5      |