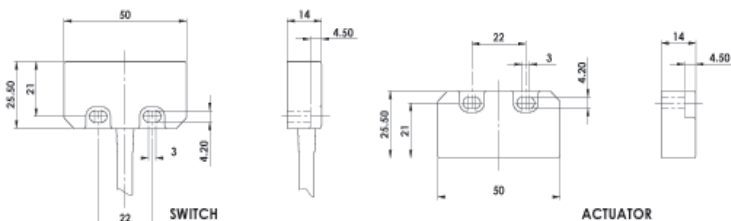


# HYGIEMAG - Magnetic Non Contact Type: SMR

## FEATURES:

Specifically designed for Food Processing applications -  
 Stainless Steel 316 Mirror Polished finish (Ra4)  
 Suitable for CIP and SIP cleaning -  
 Food Splash Zones EHEDG guidelines  
 Universal housing - 22mm fixing hole centre with a 50mm wide body  
 Wide sensing at 12mm with high tolerance to misalignment  
 Can be high pressure hosed at high temperature  
 High switching capability - up to 1.0A  
 Up to: PLe ISO13849-1  
 2NC 1NO circuits  
 Quick Connect versions available

## DIMENSIONS:

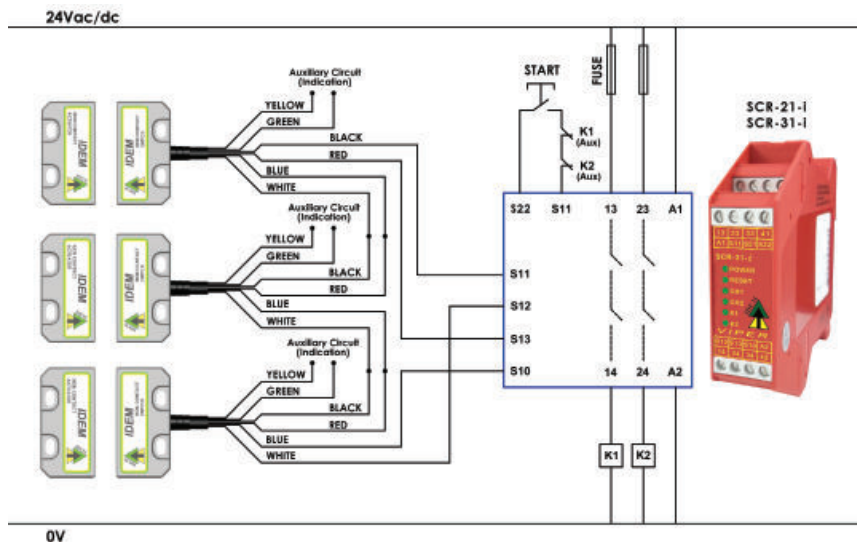


**Stainless Steel 316 Housing mirror polished (Ra4)**  
**Magnetic Actuation - Power Series 230Vac/24Vdc 1.0A**  
**Switching Tolerance up to 12mm**  
**Will operate with most Safety Relays**

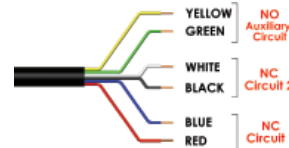
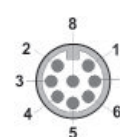


Quick Connect M12 versions fitted with 250mm (10") cable

## CONNECTION EXAMPLE: Magnetic Switches



Three SMR switches connected to an SCR-21-i or SCR-31-i to give dual channel guard monitoring with monitored manual start and contactor feedback check. Auxiliary circuits provide remote signalling from each switch.



**Standards:** ISO14119 EN60947-5-1  
 EN60204-1 ISO13849-1 EN62061 UL508

**Safety Classification and Reliability Data:**  
 Mechanical Reliability B10d  
 ISO13849-1  
 Safety Data – Annual Usage  
 Safety Channel 1 NC  
 Safety Channel 2 NC  
 Safety Channel 3 NO  
 Fuse  
 Contact Release Time  
 Initial Contact Resistance  
 Minimum Switched Current  
 Dielectric Withstand  
 Insulation Resistance  
 Recommended Setting Gap  
 Switching Distance  
 (Target to Target)  
 Tolerance to Misalignment  
 Switching Frequency  
 Approach Speed  
 Body Material  
 Operating Temperature  
 Enclosure Protection  
 Shock Resistance  
 Vibration Resistance  
 Cable Type  
 Mounting Bolts  
 Mounting Position

3.3 x 10<sup>6</sup> operations at 100mA load  
 Up to PLe depending upon system architecture  
 8 cycles per hour/24 hours per day/365 days  
 MTTFd 470 years  
 Voltage Free: 250Vac 1.0A Max. Rating  
 Voltage Free: 250Vac 1.0A Max. Rating  
 Voltage Free: 24Vdc 0.2A Max. Rating  
 Internal 1.0A (F) External 0.8A (F) (User)  
 <2ms  
 <500 milliohm  
 10Vdc 1mA  
 250Vac  
 100 Mohms  
 5mm  
 Sao 8mm Close  
 Sar 22mm Open  
 5mm in any direction from 5mm setting gap  
 1.0Hz maximum  
 200mm/min to 1000mm/sec  
 Stainless Steel 316 mirror polished finish to Ra4  
 -25C +105C (CIP SIP cleaning)  
 IP69K (NEMA PW12) IP67 (NEMA 6)  
 IEC68-2-27 11ms 30g  
 IEC68-2-6 10-55Hz 1mm  
 PVC 6 core 6mm OD Conductors 0.25mm<sup>2</sup>  
 2xM4 Tightening torque 1.0Nm  
 Any

For all IDEM switches the normally closed (NC) circuits are closed when the guard is closed and the actuator is present.

SALES NUMBER	TYPE	CABLE LENGTH	CIRCUITS
139009	Hygiemag SMR	2M	2NC
139010	Hygiemag SMR	5M	2NC
139011	Hygiemag SMR	10M	2NC
139012	Hygiemag SMR	QC-M12	2NC
139013	Hygiemag SMR	2M	2NC 1NO
139014	Hygiemag SMR	5M	2NC 1NO
139015	Hygiemag SMR	10M	2NC 1NO
139016	Hygiemag SMR	QC-M12	2NC 1NO
139017	Hygiemag SMR	2M	1NC
139018	Hygiemag SMR	5M	1NC
139019	Hygiemag SMR	10M	1NC
139020	Hygiemag SMR	QC-M12	1NC
139021	Hygiemag SMR	2M	1NC 1NO
139022	Hygiemag SMR	5M	1NC 1NO
139023	Hygiemag SMR	10M	1NC 1NO
139024	Hygiemag SMR	QC-M12	1NC 1NO

140101	Female QC Lead	M12 Female 5m. 8 way
140102	Female QC Lead	M12 Female 10m. 8 way