

## P8A, P8B Combination Units

**17 Series Filter-Regulator-Lubricator**  
**3/4", 1", 1-1/4" and 1-1/2" Port Sizes**

- **Depth type, 40 µm filter element**
- **Balanced regulator valve minimizes effect of changes in inlet pressure on outlet pressure**
- **Low torque, non-rising regulator pressure adjusting knob**
- **All around (360°) visibility of the lubricator sight-feed dome simplifies installation and adjustment**
- **Lubricator flow sensor provides a nearly constant oil/air ratio over a wide range of air flows**

Use Micro-Fog combinations in applications containing one or more points of lubrication

Use Oil-Fog combinations to lubricate a single tool, cylinder, or other air driven device



### Technical Data

Fluid: Compressed air

Maximum pressure: 250 psig (17 bar)

Operating temperature\*: 0° to 175°F (-20° to 80°C)

\* Air supply must be dry enough to avoid ice formation at temperatures below 35°F (2°C).

Start point (minimum flow required for lubricator operation): 8 scfm (3.8 dm³/s) at 90 psig (6.3 bar) inlet pressure

Regulator gauge ports:

1/4" PTF with PTF main ports

R1/4 with ISO Rc, ISO G, and BSPP main ports

Nominal bowl size: 1 quart US (1 liter)

Manual drain connection: Will fit 1/8-27 and 1/8-28 pipe thread

Automatic drain connection: Will fit 1/8-27 and 1/8-28 pipe thread

Automatic drain operating conditions (float operated)

Bowl pressure required to close drain: Greater than 5 psig (0.3 bar)

Bowl pressure required to open drain: Less than 3 psig (0.2 bar)

Minimum air flow required to close drain: 2 scfm (1 dm³/s)

Manual operation: Depress pin inside drain outlet to drain bowl

Recommended lubricants: See Section ALE-29.

Materials

Bodies, bowls, regulator bonnet: Aluminum

Bowl sight glass: Pyrex

Filter element: Sintered bronze

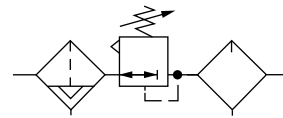
Regulator bottom plug: Acetal

Regulator valve: Aluminum and nylon

Lubricator sight-feed dome: Transparent nylon

Elastomers: Neoprene and nitrile

### ISO Symbols



Filter with automatic drain, relieving regulator, lubricator with manual drain

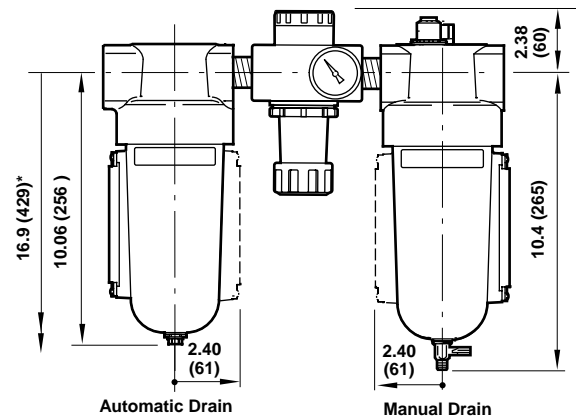
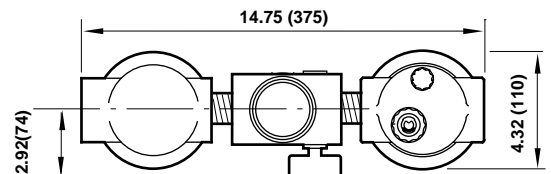
**See Section ALE-24 for Accessories**

Port Size	Micro-Fog Models	Oil-Fog Models	Weight lbs (kg)
3/4"	P8A-660-A3DA	P8B-660-A3DA	6.69 (3.03)
1"	P8A-860-A3DA	P8B-860-A3DA	6.29 (2.85)
1-1/4"	P8A-A60-A3DA	P8B-A60-A3DA	7.51 (3.41)
1-1/2"	P8A-B60-A3DA	P8B-B60-A3DA	6.88 (3.12)

## Alternative Models

Filter Drain	Substitute
Automatic	A
Manual	M

All Dimensions in Inches (mm)



## Service Kits

Item	Type	Part Number
Lubricator service kit	All o-rings, seals, gaskets	5771-02
Filter service kit	All o-rings, seals, gaskets	5578-05
	40 µm element	5311-03
Replacement drain	Automatic	3000-10
Sight glass kit *	Pyrex	2273-22
Regulator service kit **	Relieving	5578-02
	Non relieving	5578-01
Replacement drain	1/4 Turn	619-50

\*\* Regulator service kit contains, diaphragm, all o-rings, valve, and valve spring.