



## VacuMove flexible vacuum lifter

Product overview

## TAWI ergonomic lifting equipment

Swedish quality. Global solutions.

Ergonomics is about adjusting work and work environments to the needs of the employees. It's about planning and organizing work in a way that contributes to healthy employees and minimizes the risk of injuries and long term health challenges. Good ergonomics is an effective way of making your business more productive and profitable.

TAWI lifting equipment has been facilitating ergonomic material handling for decades, and by customizing our solutions to your specific needs we can guarantee that they will help lift your business.



Your contact person at TAWI is only a phone call away..



(630) 655-2905



sales@tawi.us



www.tawi.com

More information available at [www.tawi.com](http://www.tawi.com)

## Increase efficiency, safety and ergonomics with a VacuMove



The VacuMove is a leading manual vacuum lifter that will lift, lower, move and turn most types of goods in all possible environments and working conditions.



### Protect your employees

Goods are easily picked up with no physical effort for the operator.

Handling difficult and heavy goods such as these large wooden panels is easy with a VacuMove.

No heavy lifting and no uncomfortable strain on the body means no more aching shoulders, backs and knees.



### Boost efficiency and lower the costs

Using TAWI lifters means that large and heavy goods can be handled by one single person, saving valuable time and resources for your business.

The challenge of increasing productivity and ergonomics at the same time is increasingly important for more and more companies.

Our focus is to help you achieve this.

# Anyone can lift

## Versatile and flexible

The VacuMove lifts just about anything. Choose between 12 models for lifting bags, boxes, sheets, panels, crates, bales, drums and much more, up to 600 lbs.

A wide selection of handles and suction feet helps customize the lifter to meet your needs. Lift from the top, from the side, or whatever suits your needs.



## Safe and reliable

Lifting should be easy and safe in all possible working conditions, for both the operator and the product.

The VacuMove is a safe and reliable tool commonly used in manufacturing and mechanical processing, warehouses and distribution terminals. Also available for explosion proof facilities. Stainless steel models, ideal for industries with high sanitary requirements, are available on request.

# just about anything



## Ergonomic

Extremely smooth and quick operation is accomplished by using the same handle to lift, lower and release the load, and by using the vacuum to hold and lift the load.

A VacuMove lets anyone handle goods in all sizes, up to 600 lbs, with practically no effort at all.



## Efficient

A two-man job can often be carried out by one operator with a VacuMove. The lifting system is simple to adjust to suit loads and requirements of most industries.

With a TAWI solution for your lifting needs, you achieve a powerful combination of efficiency, ergonomics and economy that will boost your business. An efficient solution, including everything you need to optimize your manual handling of goods.

## VacuMove standard models

Model	VM20	VM30	VM40	VM50	VM60
Lifting capacity	20 kg/45 lbs	30 kg/65 lbs	40 kg/90 lbs	50 kg/110 lbs	60 kg/125 lbs
Max length lift tube	2 000 mm	2 500 mm	2 500 mm	2 500 mm	4 000 mm
Hose Ø	80 mm	100 mm	120 mm	140 mm	160 mm
Stroke	1 500 mm	1 800 / 2 600 mm	1 800 / 2 600 mm	1 800 / 2 600 mm	1 800 / 2 600 mm
Lifting speed	0-1 m/s	0-1 m/s	0-1 m/s	0-1 m/s	0-1 m/s

Model	VM80	VM100	VM120	VM180	VM270
Lifting capacity	80 kg/175 lbs	100 kg/220 lbs	120 kg/265 lbs	180 kg/400 lbs	270 kg/600 lbs
Max length lift tube	4 000 mm	2 500 mm	4 000 mm	2 500 mm	2 500 mm
Hose Ø	180 mm	200 mm	230 mm	250 mm	300 mm
Stroke	1 800 / 2 600 mm	1 700 / 2 400 mm	1 700 / 2 400 mm	1 500 / 1 800 mm	1 500 / 1 800 mm
Lifting speed	0-1 m/s	0-1 m/s	0-1 m/s	0-1 m/s	0-1 m/s

VM20-VM120 are available in stainless steel, ideal for industries with high sanitary requirements. VM180 and VM270 are available in stainless steel with standard hose.



We recommend mounting your VacuMove in our own range of TAWI Crane Systems. The jib arm or bridge crane suspends the lift tube and is available in different lengths and capacities.

Contact your TAWI representative for more information about our overhead Crane Systems and Jib Cranes.

## Vacuum pumps

Our vacuum pumps are designed with three key features in mind; performance, reliability and sustainability. The direct driven pump minimizes friction and unnecessary wear, ensuring continuous operations for your vacuum lifters.

TAWI vacuum pumps are available in two models; medium and large. The medium model is recommended for VM30-50, the large model for VM60-270.



Any questions? Contact TAWI directly

# Handles



Standard handle for VM 60-270



Standard handle for VM 30-50



Flex handle



Special handle

A wide selection of handles ensures an ergonomic lifting solution for every operator.

A wide selection of standard suction feet and our ability to build customized special suction feet guarantees that we can help you lift whatever you need to lift.

# Suction feet



Standard handle with special suction foot 630200



Standard handle with suction foot for bags 630300



Standard handle with hook tool 630460



Flex handle with suction foot for boxes 630650



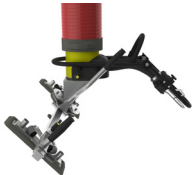
Standard handle with suction foot 610650



Flex handle with suction foot for rolls 610400



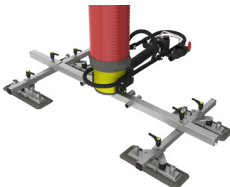
Standard handle with suction foot for bags 610320



Flex handle with suction foot for sheets 610620, angle adapter 610810, and handle for angle adapter 610811



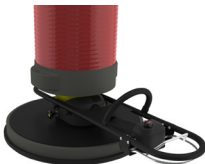
Flex handle with suction for side lifting 610850



Flex handle with special spider yoke for lifting sheets



Flex handle with suction foot 610700



Suction foot for drums 650210

# TAWI

Proud Members of the Following Associations:



International Dairy Foods Association



The Association for Packaging and Processing Technologies



**USA Headquarters:**

TAWI USA  
380 Internationale Drive  
Suite A  
Bolingbrook, IL 60440  
Tel: (630) 655-2905  
sales@tawi.us

**Sweden Corporate Office:**

TAWI AB  
Box 102 05  
434 23 Kungsbacka  
Tel: +46 300 -185 00  
info@tawi.com

**Germany:**

TAWI GmbH August-  
Thyssen-Str. 1 D-41564  
Kaarst  
Tel: +49 211 20542740  
info@tawi.de

**Netherlands:**

TAWI BV  
Postbus 6092  
5700 ET Helmond Houtse  
Parallelweg 34-35 5706 AB  
HELMOND  
Tel: +31 492-523705  
info@tawi.nl

**United Kingdom:**

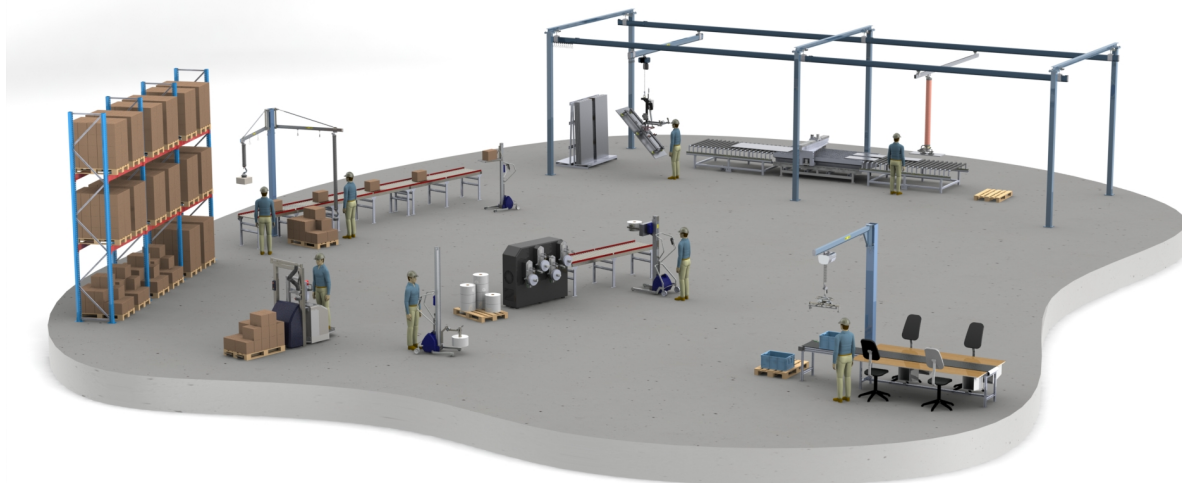
TAWI UK Ltd  
Unit G, Pentagon Park, io  
Centre, Lodge Farm  
Northampton, NN57UW  
Tel: +44 1604 591120  
sales@tawi.co.uk

**Denmark:**

TAWI DANMARK A/S  
ArresÅ,vej 7  
DK-8240 Risskov  
Tel: +45 86 17 22  
mail@tawidanmark.dk

**Canada:**

TAWI Canada Inc.  
120 Newkirk Rd., Unit 7  
Richmond Hill ON L4C 9S7  
Tel: +1 905 884 1633  
info@tawi.ca



Mobile Solutions

Crane Systems

Hoists

Vacuum Lifters

Vacuum Grippers

TAWI USA, 380 Internationale Drive, Suite A, Bolingbrook, IL 60440  
Tel: (630) 655-2905, sales@tawi.us, www.tawi.com