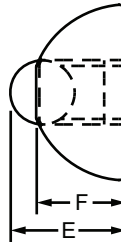
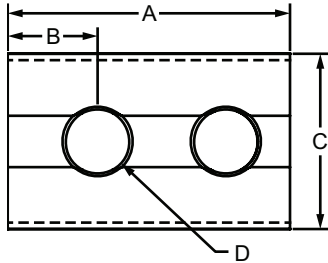


Roll-In T-Nut with Ball Spring

Part Description:

The roll-in T-nut with ball spring is a fastening option that loads from the profile ends or side, which is helpful for applications where the ends are inaccessible. The ball spring holds the T-nut in the T-slot, even when the profile is in a vertical position, simplifying the assembly process. It is available with options in size, material, thread, and finish. For information on 80/20 screw and bolt offerings for the roll-in T-nut with ball spring refer to pages beginning on 387.



| Part No. | Series | Material | Grade | Finish | A | B | C | D (Thread) | E | F | Weight |
|----------|--------|-----------------|---------------|-------------|---------|--------|---------|------------|--------|--------|----------|
| 3919 | 10 | Steel | 1045 | Bright Zinc | .630" | .213" | .386" | M4 x 0.7 | .253" | .203" | .009 lb |
| 3920 | 10 | Steel | 1045 | Bright Zinc | .630" | .213" | .386" | M5 x 0.8 | .253" | .203" | .009 lb |
| 3921 | 10 | Steel | 1045 | Bright Zinc | .630" | .213" | .386" | M6 x 1.0 | .253" | .203" | .008 lb |
| 3922 | 10 | Steel | 1045 | Bright Zinc | .630" | .213" | .386" | 10-32 | .253" | .203" | .008 lb |
| 3923 | 10 | Steel | 1045 | Bright Zinc | .630" | .213" | .386" | 1/4-20 | .253" | .203" | .008 lb |
| 3666 | 10 | Stainless-Steel | 304 Stainless | Stainless | .630" | .213" | .386" | M4 x 0.7 | .253" | .203" | .008 lb |
| 3667 | 10 | Stainless-Steel | 304 Stainless | Stainless | .630" | .213" | .386" | M5 x 0.8 | .253" | .203" | .009 lb |
| 3668 | 10 | Stainless-Steel | 304 Stainless | Stainless | .630" | .213" | .386" | M6 x 1.0 | .253" | .203" | .008 lb |
| 3669 | 10 | Stainless-Steel | 304 Stainless | Stainless | .630" | .213" | .386" | 10-32 | .253" | .203" | .009 lb |
| 3670 | 10 | Stainless-Steel | 304 Stainless | Stainless | .630" | .213" | .386" | 1/4-20 | .253" | .203" | .009 lb |
| 3913 | 15 | Steel | 1045 | Bright Zinc | .866" | .234" | .539" | M5 x 0.8 | .343" | .276" | .023 lb |
| 3914 | 15 | Steel | 1045 | Bright Zinc | .866" | .234" | .539" | M6 x 1.0 | .343" | .276" | .022 lb |
| 3915 | 15 | Steel | 1045 | Bright Zinc | .866" | .234" | .539" | M8 x 1.25 | .343" | .276" | .021 lb |
| 3916 | 15 | Steel | 1045 | Bright Zinc | .866" | .234" | .539" | 1/4-20 | .343" | .276" | .022 lb |
| 3917 | 15 | Steel | 1045 | Bright Zinc | .866" | .234" | .539" | 5/16-18 | .343" | .276" | .022 lb |
| 13018 | 15 40 | Stainless-Steel | 304 Stainless | Stainless | 22.00mm | 6.50mm | 13.70mm | 1/4-20 | 8.70mm | 7.00mm | .0095 kg |
| 13021 | 15 40 | Stainless-Steel | 304 Stainless | Stainless | 22.00mm | 6.50mm | 13.70mm | 5/16-18 | 8.70mm | 7.00mm | .0091 kg |
| 40-3913 | 40 | Steel | 1045 | Bright Zinc | 22.00mm | 5.90mm | 13.70mm | M5 x 0.8 | 8.70mm | 7.00mm | .0100 kg |
| 40-3914 | 40 | Steel | 1045 | Bright Zinc | 22.00mm | 5.90mm | 13.70mm | M6 x 1.0 | 8.70mm | 7.00mm | .0100 kg |
| 40-3915 | 40 | Steel | 1045 | Bright Zinc | 22.00mm | 5.90mm | 13.70mm | M8 x 1.25 | 8.70mm | 7.00mm | .0091 kg |

