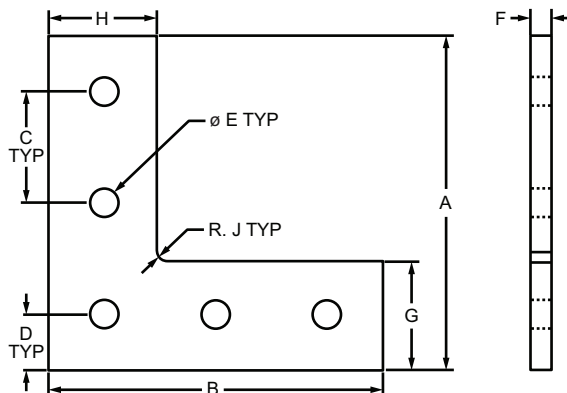


5 Hole - "L" Flat Plate

Part Description:

The 5 hole - "L" flat plate is a strong, external fastening method offering a long-lasting connection. This flat plate creates a 90° angle between profiles and is typically used to form a corner connection. The fastener is flush with the profiles, allowing for a larger clearance area. It requires no machining services, is easy to assemble, and can be reconfigured and reused. **Tip:** Use double or triple slide-in economy T-nuts (pg. 366-367) to save time and money. Pre-load your hardware prior to connecting profiles to simplify your assembly.



Part No.	Series	Material	Alloy*	Finish	A	B	C	D	E	F	G	H	J	Weight
4081	10	Aluminum	6105-T5	Clear Anodize	3.000"	3.000"	1.000"	.500"	.257"	.188"	.971"	.971"	.082"	.082 lb
4081-Black	10			Black Anodize	3.000"	3.000"	1.000"	.500"	.257"	.188"	.971"	.971"	.082"	.082 lb
4481	15			Clear Anodize	4.500"	4.500"	1.500"	.750"	.328"	.250"	1.464"	1.464"	.125"	.257 lb
4481-Black	15			Black Anodize	4.500"	4.500"	1.500"	.750"	.328"	.250"	1.464"	1.464"	.125"	.257 lb
20-4081	20			Clear Anodize	60.00mm	60.00mm	20.00mm	10.00mm	5.56mm	4.00mm	19.00mm	19.00mm	2.38mm	.0193 kg
20-4081-Black	20			Black Anodize	60.00mm	60.00mm	20.00mm	10.00mm	5.56mm	4.00mm	19.00mm	19.00mm	2.38mm	.0193 kg
25-4081	25			Clear Anodize	75.00mm	75.00mm	25.00mm	12.50mm	6.30mm	4.00mm	24.00mm	24.00mm	2.38mm	.0308 kg
25-4081-Black	25			Black Anodize	75.00mm	75.00mm	25.00mm	12.50mm	6.30mm	4.00mm	24.00mm	24.00mm	2.38mm	.0308 kg
30-4481	30			Clear Anodize	90.00mm	90.00mm	30.00mm	15.00mm	6.81mm	4.00mm	29.00mm	29.00mm	3.18mm	.0452 kg
30-4481-Black	30			Black Anodize	90.00mm	90.00mm	30.00mm	15.00mm	6.81mm	4.00mm	29.00mm	29.00mm	3.18mm	.0452 kg
40-4481	40			Clear Anodize	120.00mm	120.00mm	40.00mm	20.00mm	8.33mm	6.00mm	39.00mm	39.00mm	4.76mm	.1224 kg
40-4481-Black	40			Black Anodize	120.00mm	120.00mm	40.00mm	20.00mm	8.33mm	6.00mm	39.00mm	39.00mm	4.76mm	.1224 kg
45-4481	45			Clear Anodize	135.00mm	135.00mm	45.00mm	22.50mm	8.33mm	6.00mm	44.00mm	44.00mm	4.76mm	.1564 kg
45-4481-Black	45			Black Anodize	135.00mm	135.00mm	45.00mm	22.50mm	8.33mm	6.00mm	44.00mm	44.00mm	4.76mm	.1564 kg

* Or comparable

Suggested Hardware (Mount to T-Slot)

Part No.	Series	Qty.	Bolt	T-Nut
3321	10	5	1/4-20 x 1/2" FBHSCS	Economy
3320	15	5	5/16-18 x 11/16" FBHSCS	Economy
75-3656	20	5	M5 x 10mm BHSCS	Economy
75-3404	25	5	M6 x 10mm BHSCS	Economy
75-3600	30	5	M6 x 12mm BHSCS	Drop-in
75-3422	40	5	M8 x 16mm BHSCS	Economy
75-3619	45	5	M8 x 18mm BHSCS	Drop-in

