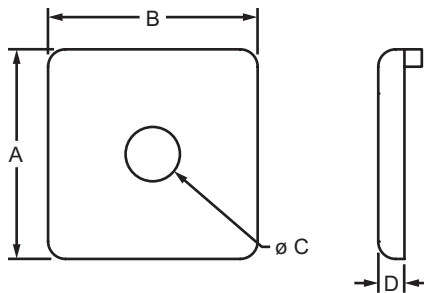


Part Description:

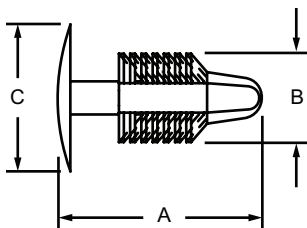
The end cap with push-in fastener adds a finishing touch to your project and closes off profile ends to limit dust and debris buildup. It can be installed with a push-in fastener, self-tapping screw (page 788) or into a tapped hole using a button head socket cap screw. Choose from black, red, blue, yellow or gray to color-coordinate with your application. The black end cap is available with or without the 80/20 logo, while the colored caps include the logo.



| 80/20 Black Cap | Red Cap | Blue Cap | Yellow Cap | Gray Cap | Black Cap | Series | A | B | C | D | Weight |
|-----------------|---------|----------|------------|----------|------------|--------|--------|--------|-------|-------|---------|
| 2015 | 2015RED | 2015BLU | 2015YEL | 2015GRA | 2015-Plain | 10 | 1.000" | 1.000" | .257" | .125" | .008 lb |
| 2025 | 2025RED | 2025BLU | 2025YEL | 2025GRA | 2025-Plain | 10 | 1.000" | 2.000" | .257" | .125" | .009 lb |
| 2026 | 2026RED | 2026BLU | 2026YEL | 2026GRA | 2026-Plain | 10 | 1.000" | 3.000" | .257" | .125" | .013 lb |
| 2028 | 2028RED | 2028BLU | 2028YEL | 2028GRA | 2028-Plain | 10 | 2.000" | 2.000" | .257" | .125" | .017 lb |
| 2030 | 2030RED | 2030BLU | 2030YEL | 2030GRA | 2030-Plain | 15 | 1.500" | 1.500" | .328" | .188" | .013 lb |
| 2045 | 2045RED | 2045BLU | 2045YEL | 2045GRA | 2045-Plain | 15 | 1.500" | 3.000" | .328" | .188" | .031 lb |
| 2046 | 2046RED | 2046BLU | 2046YEL | 2046GRA | 2046-Plain | 15 | 1.500" | 4.500" | .328" | .188" | .049 lb |
| 2050 | 2050RED | 2050BLU | 2050YEL | 2050GRA | 2050-Plain | 15 | 3.000" | 3.000" | .328" | .188" | .064 lb |

| 80/20 Black Cap | Black Cap | Series | Material | Finish | Process | A | B | C | D | Weight |
|-----------------|---------------|--------|----------|--------|---------|---------|---------|--------|--------|----------|
| 25-2015 | 25-2015-Plain | 25 | ABS | Matte | Molded | 25.00mm | 25.00mm | 6.80mm | 3.00mm | .0044 kg |
| 25-2025 | 25-2025-Plain | 25 | | | | 25.00mm | 50.00mm | 6.80mm | 3.00mm | .0068 kg |
| 25-2028 | 25-2028-Plain | 25 | | | | 50.00mm | 50.00mm | 6.80mm | 3.00mm | .0034 kg |
| 40-2030 | 40-2030-Plain | 40 | | | | 40.00mm | 40.00mm | 8.40mm | 4.50mm | .0068 kg |
| 40-2045 | 40-2045-Plain | 40 | | | | 40.00mm | 80.00mm | 8.50mm | 4.50mm | .0132 kg |
| 40-2050 | 40-2050-Plain | 40 | | | | 80.00mm | 80.00mm | 8.50mm | 4.50mm | .0282 kg |

Push-In Fastener



3272, 25-3272



3274, 40-3274

| Black Cap | Red Cap | Blue Cap | Yellow Cap | Gray Cap | Series | Material | A | B | C | Weight |
|-----------|---------|----------|------------|----------|--------|----------|---------|--------|---------|----------|
| 3272 | 3272RED | 3272BLU | 3272YEL | 3272GRA | 10 | Plastic | .555" | .240" | .400" | .0004 lb |
| 3274 | 3274RED | 3274BLU | 3274YEL | 3274GRA | 15 | | .895" | .300" | .700" | .0020 lb |
| 25-3272 | — | — | — | — | 25 | | 14.10mm | 6.10mm | 10.16mm | .0002 kg |
| 40-3274 | — | — | — | — | 40 | | 22.73mm | 7.62mm | 17.88mm | .0009 kg |